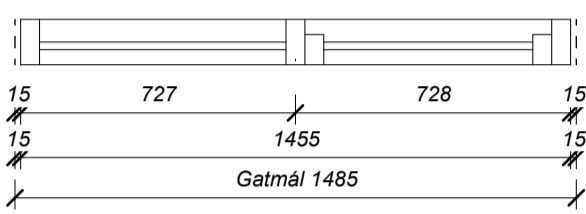
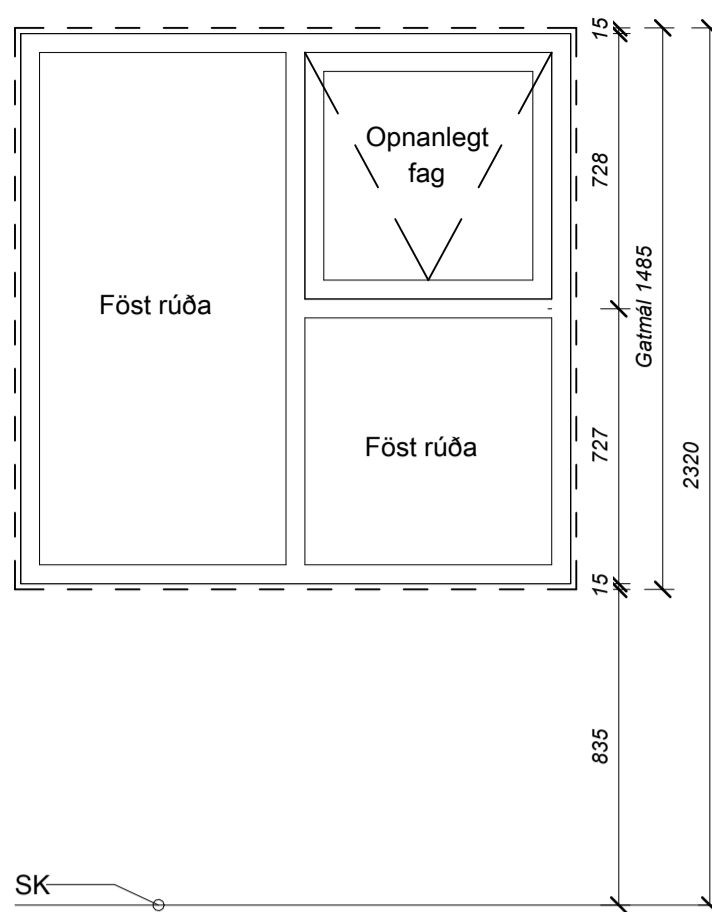
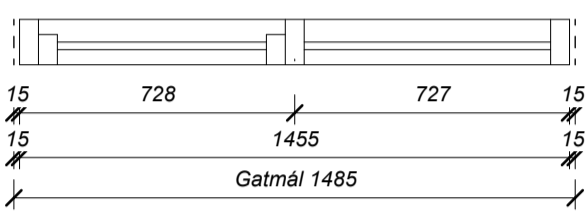
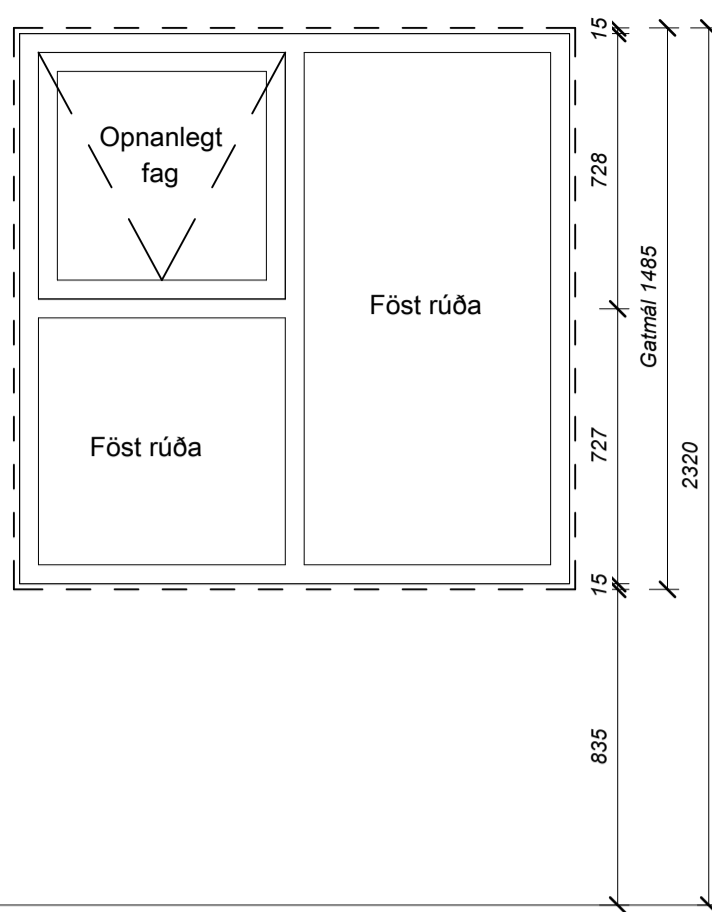


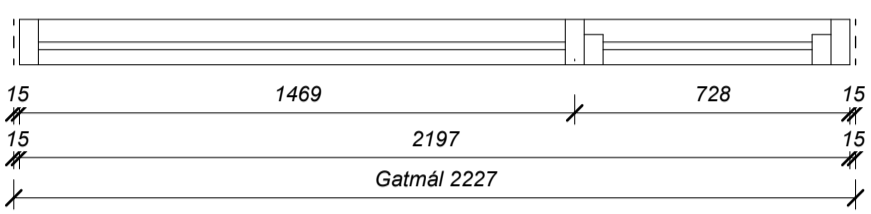
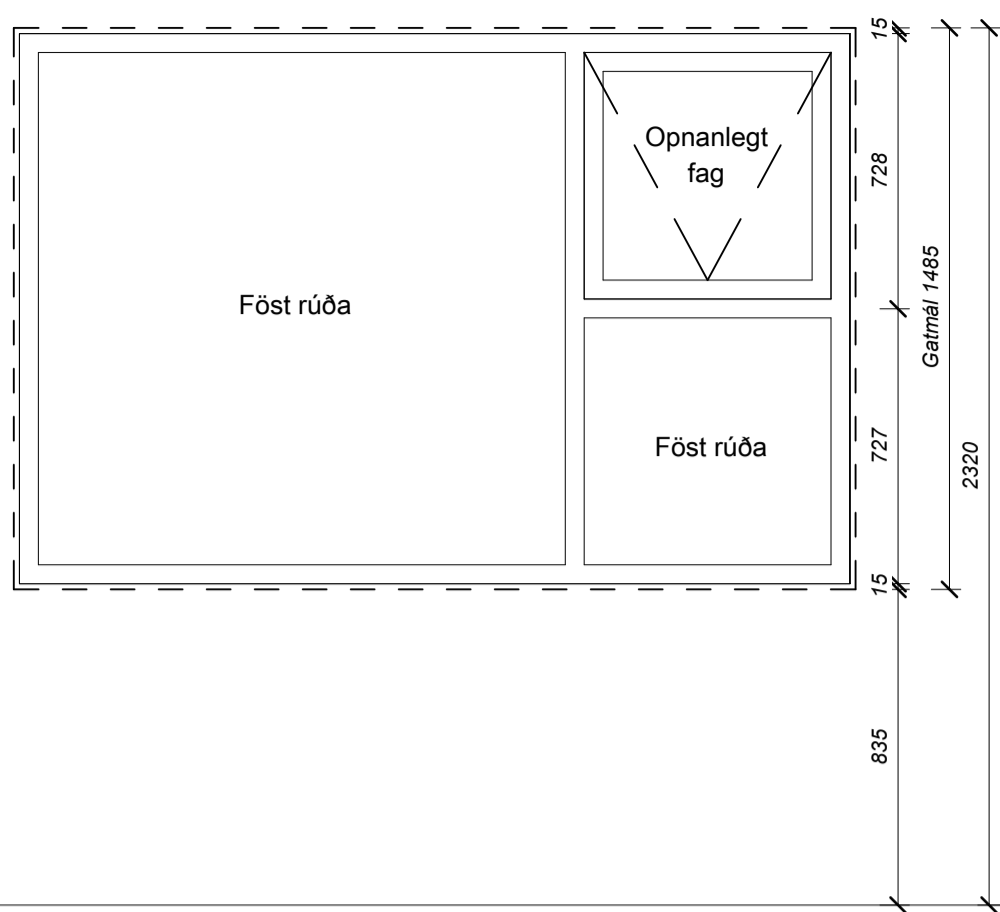
G-1a (Rw + Ctr = 26dB)



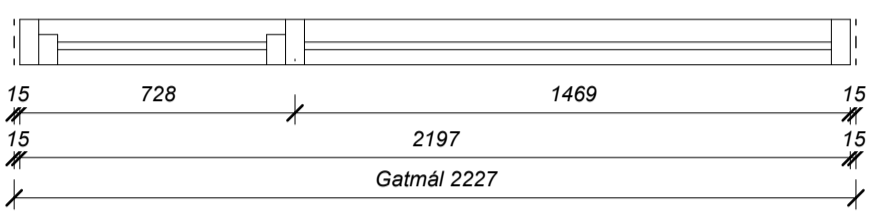
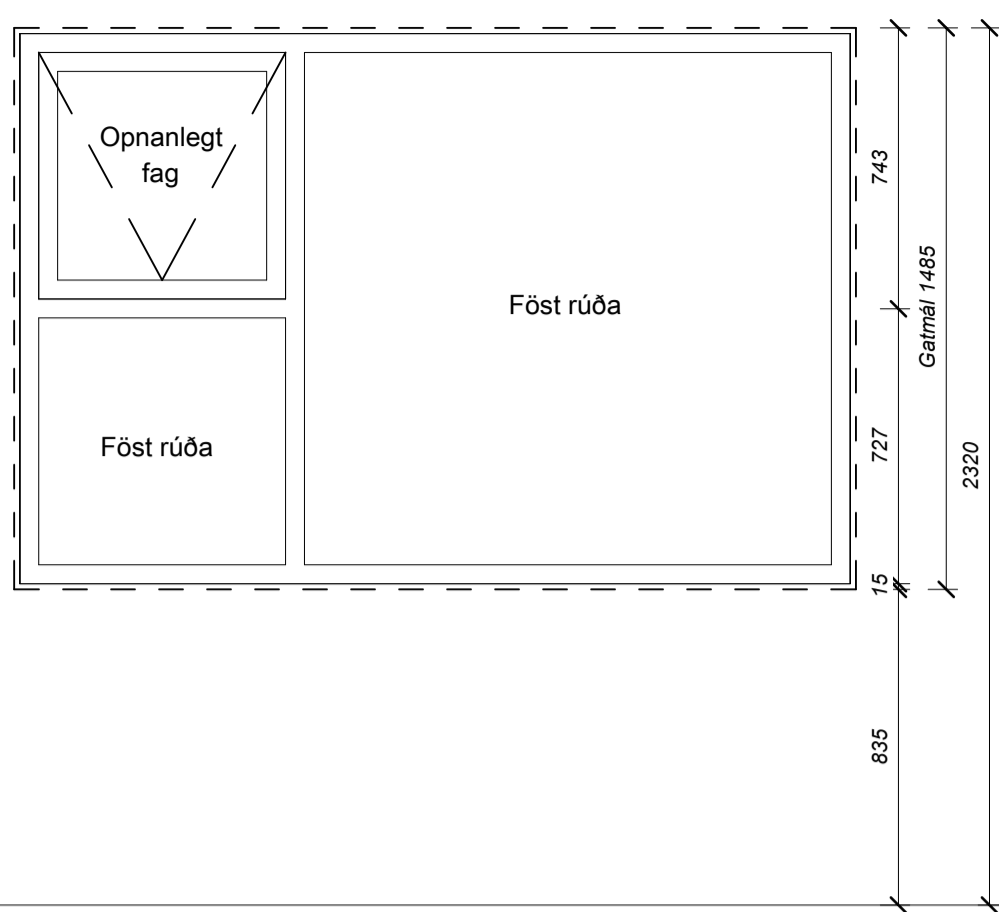
G-1b (Rw + Ctr = 26dB)



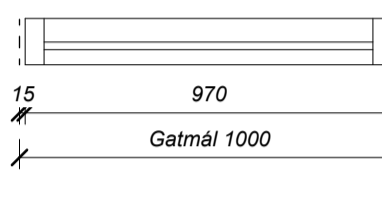
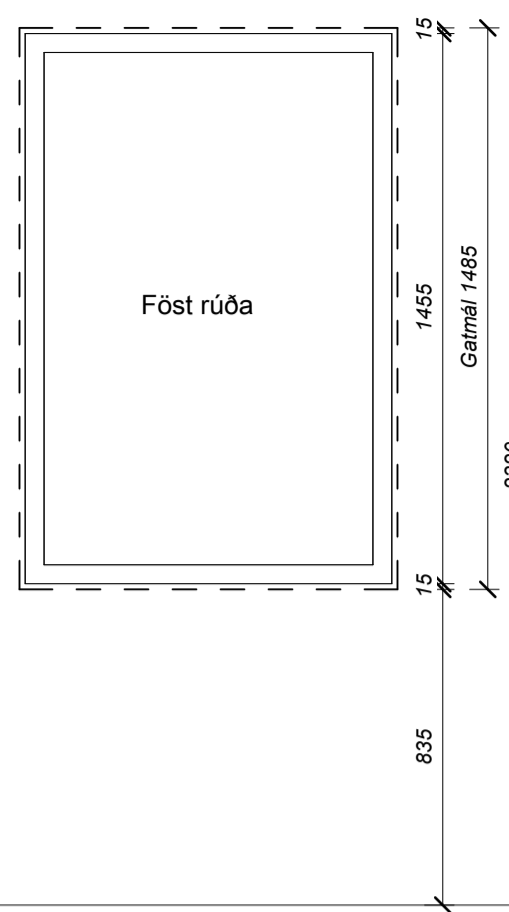
G-2a (Rw + Ctr = 26dB)



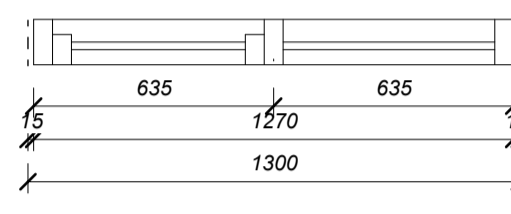
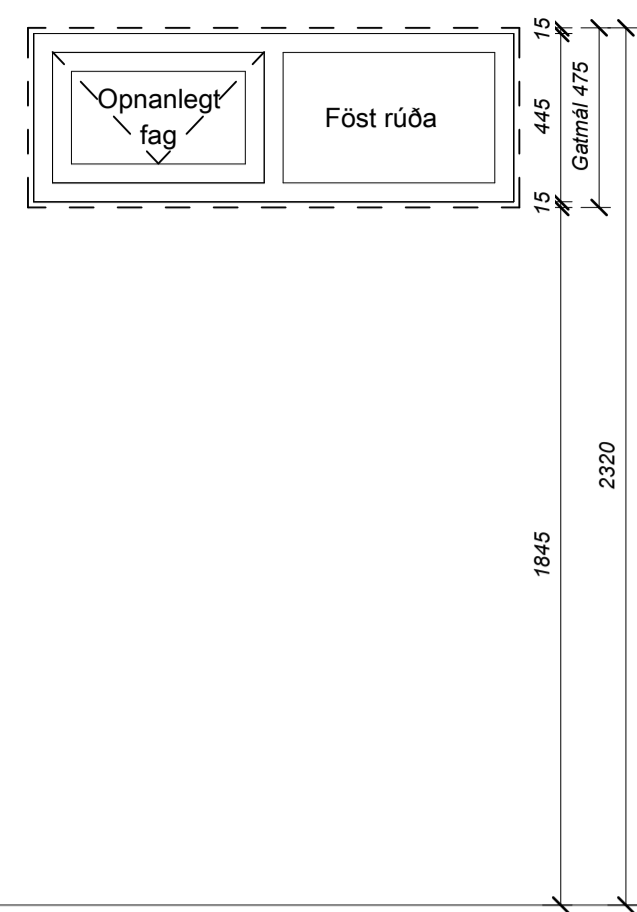
G-2b (Rw + Ctr = 26dB)



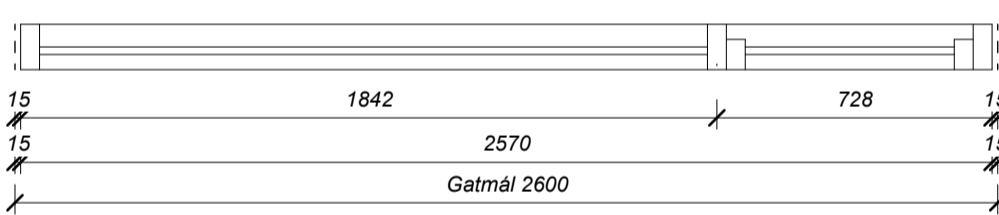
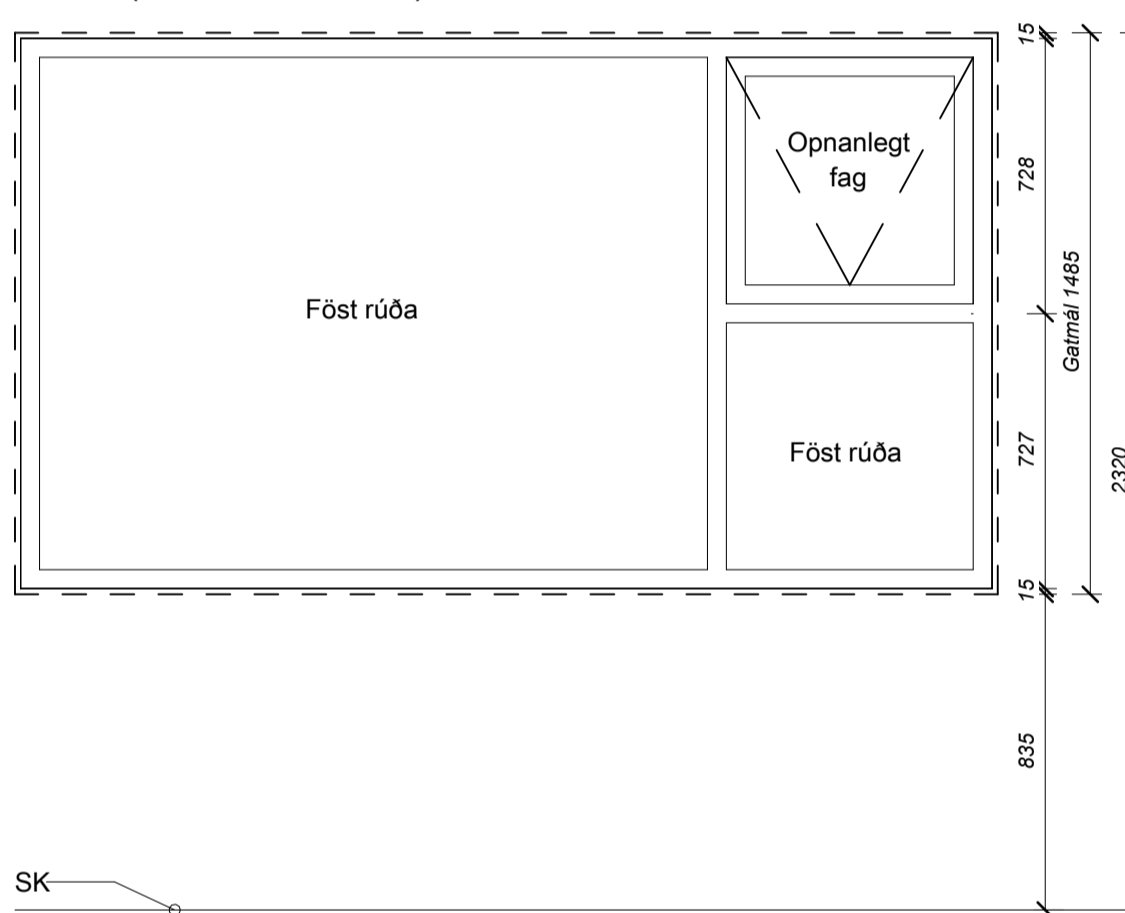
G-13 (Rw + Ctr = 36dB)



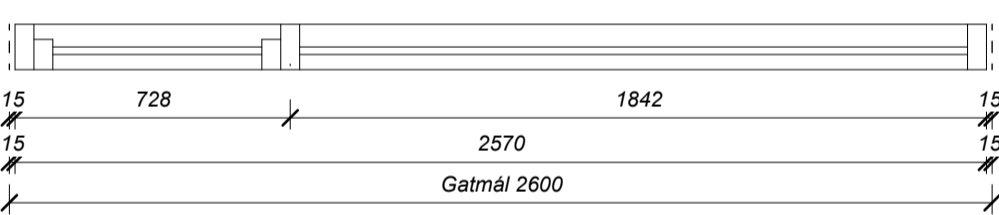
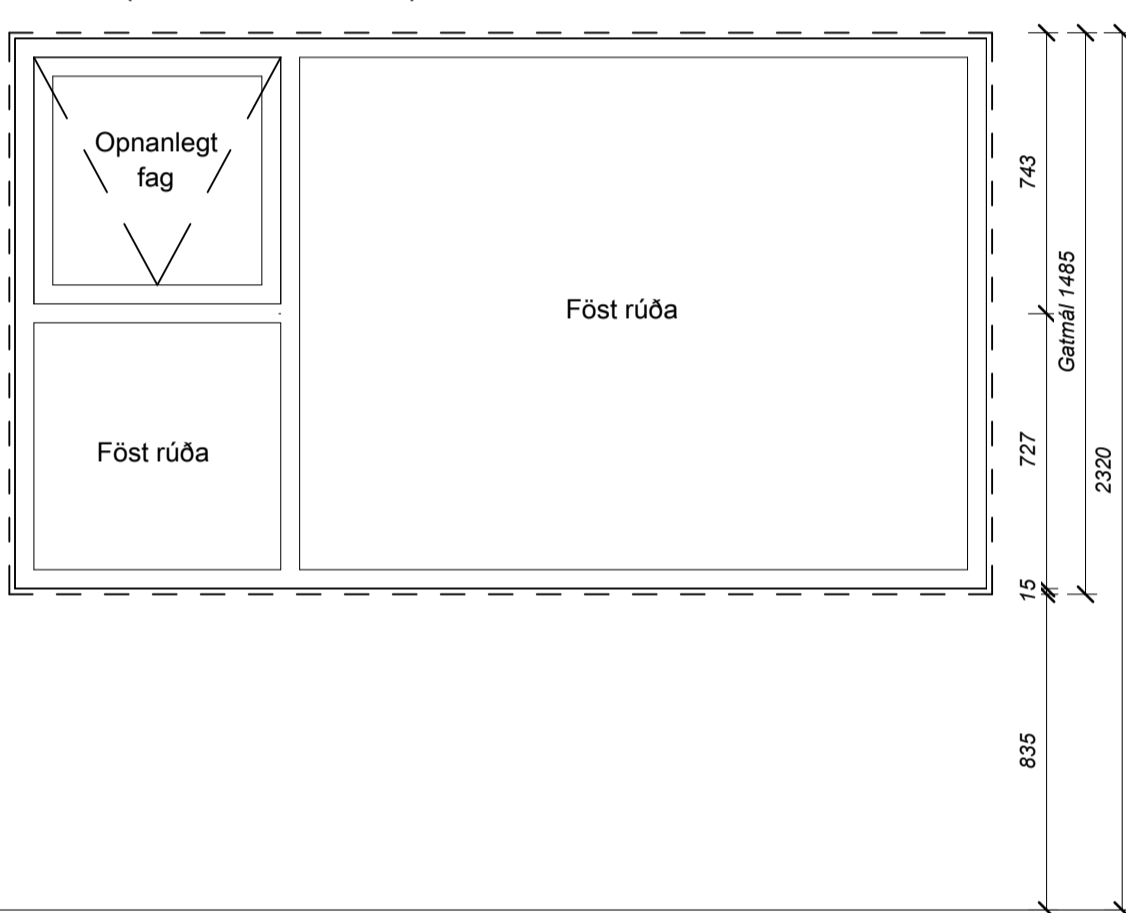
G-7 (Rw = 29dB)



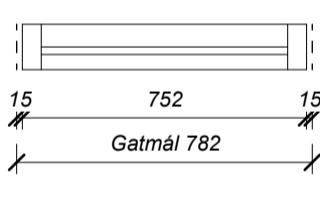
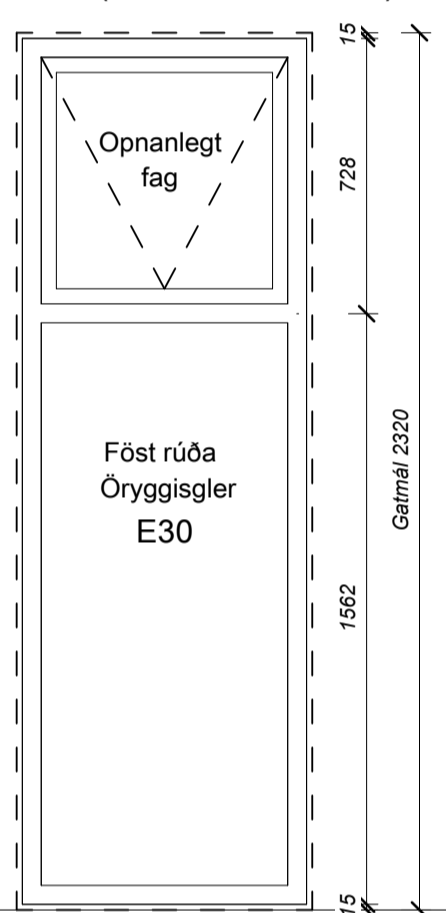
G-3a (Rw + Ctr = 26dB)



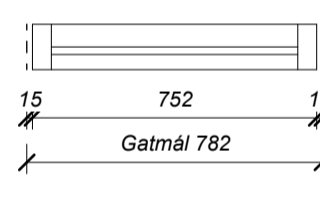
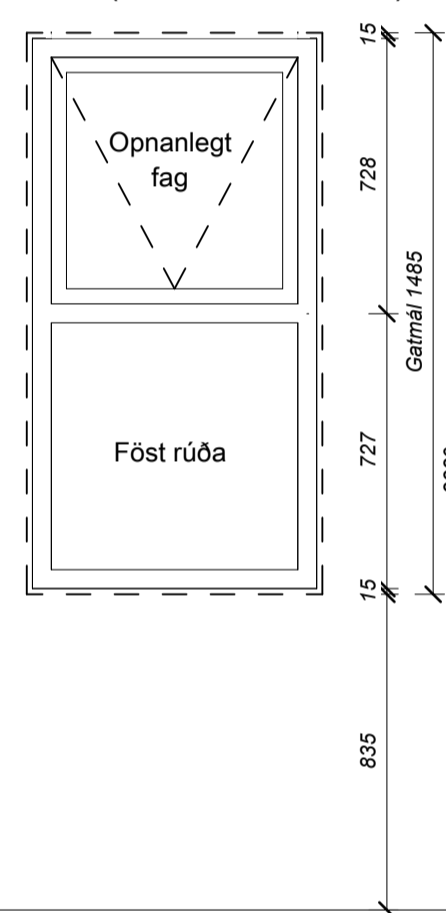
G-3b (Rw + Ctr = 26dB)



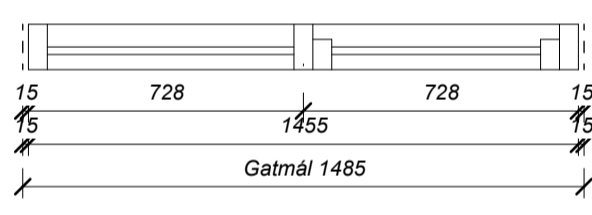
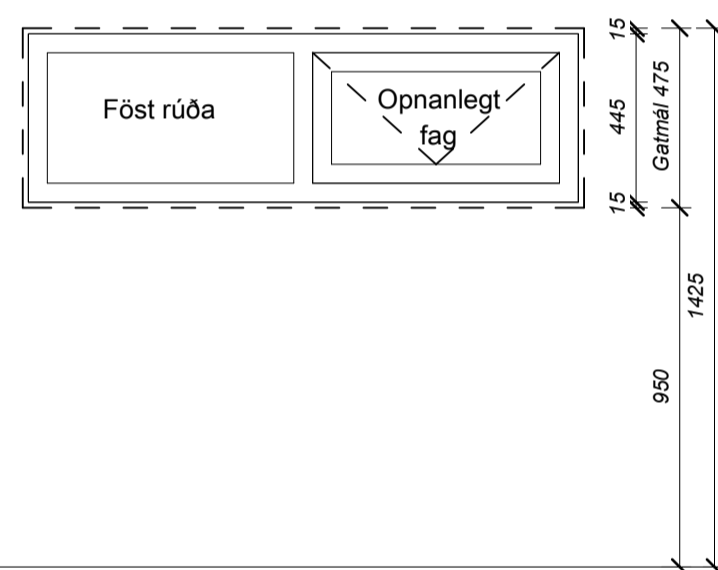
G-4 (Rw + Ctr = 32dB), E30



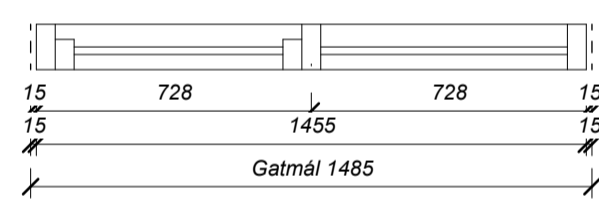
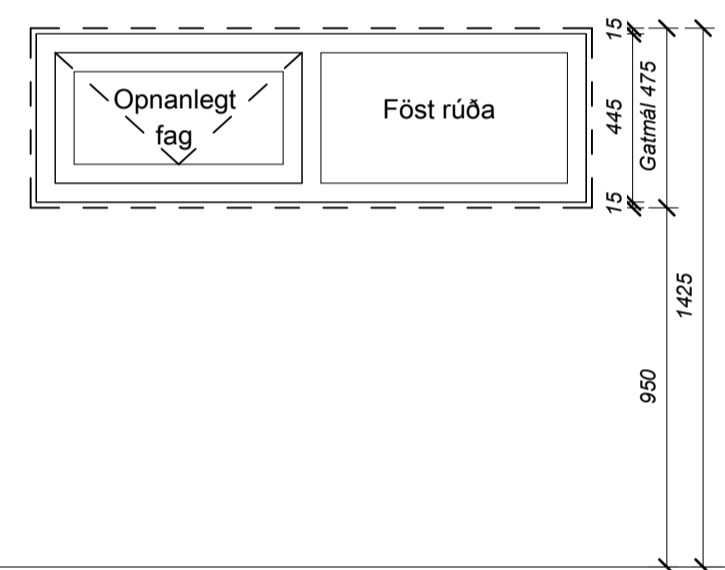
G-5 (Rw + Ctr = 32dB)



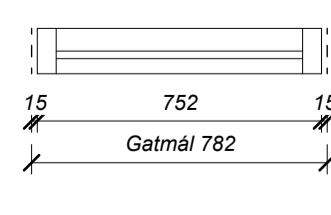
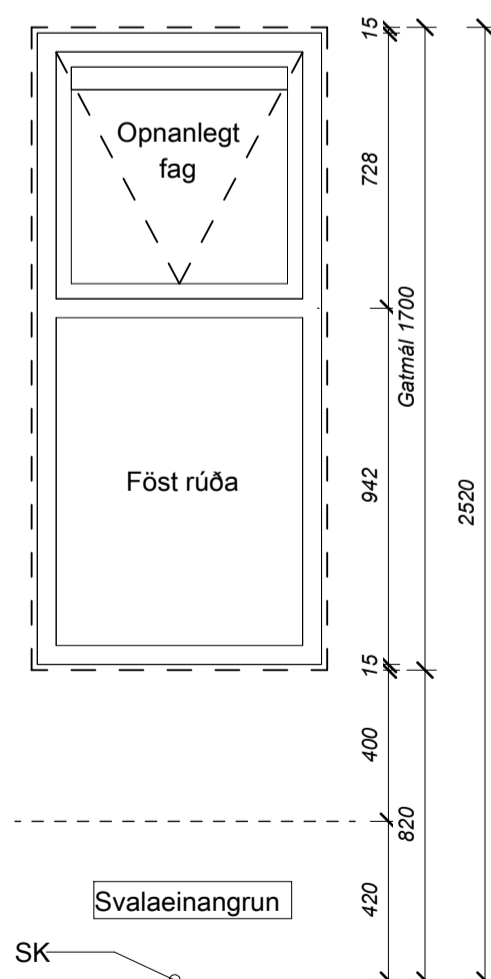
G-6a (Rw = 41dB)



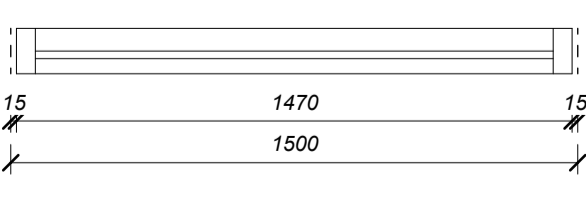
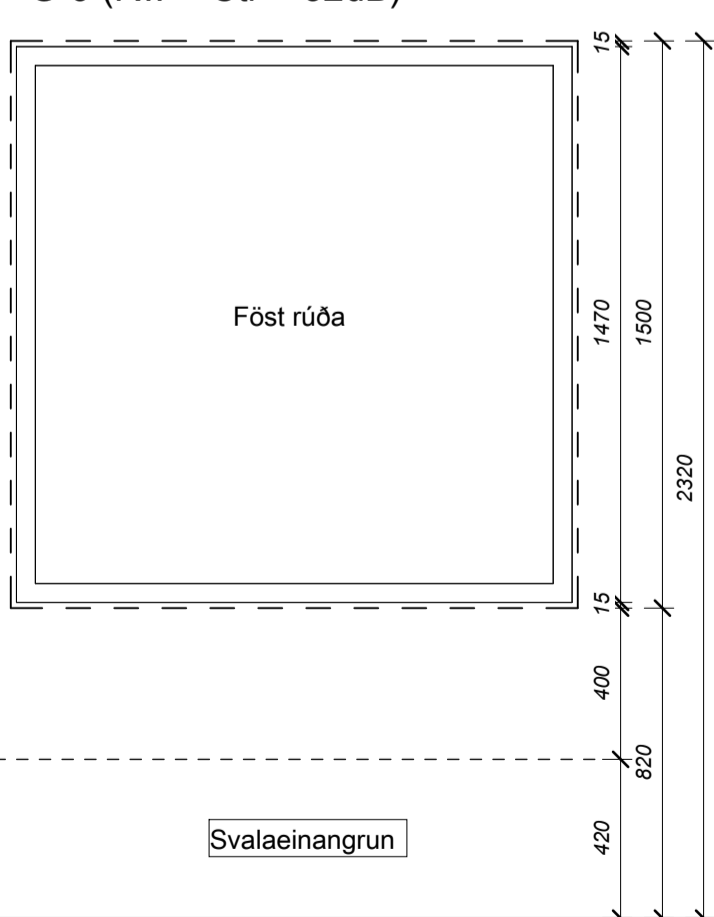
G-6b (Rw = 41dB)



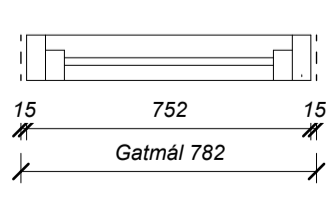
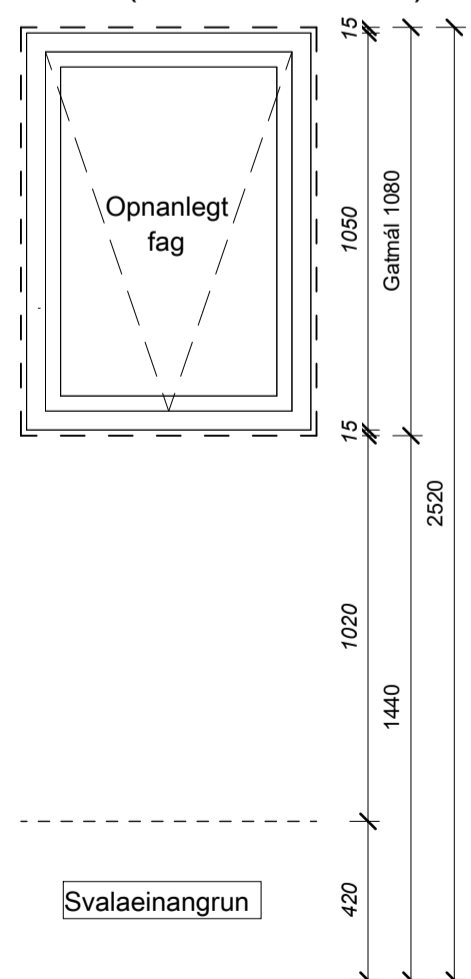
G-8 (Rw + Ctr = 32dB)



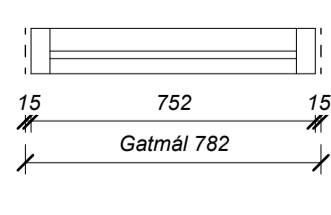
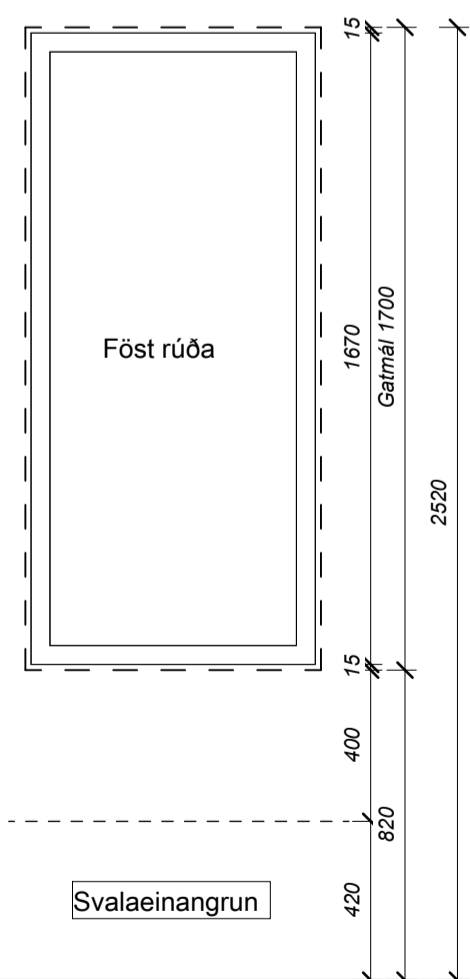
G-9 (Rw + Ctr = 32dB)



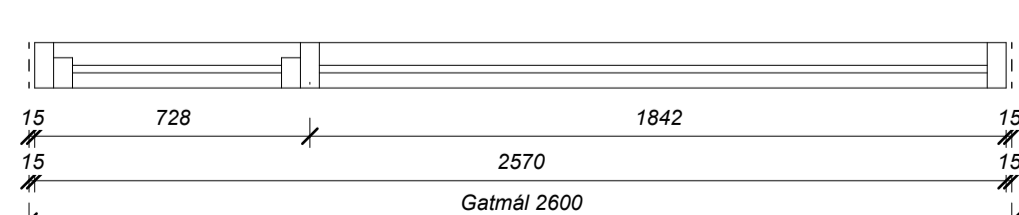
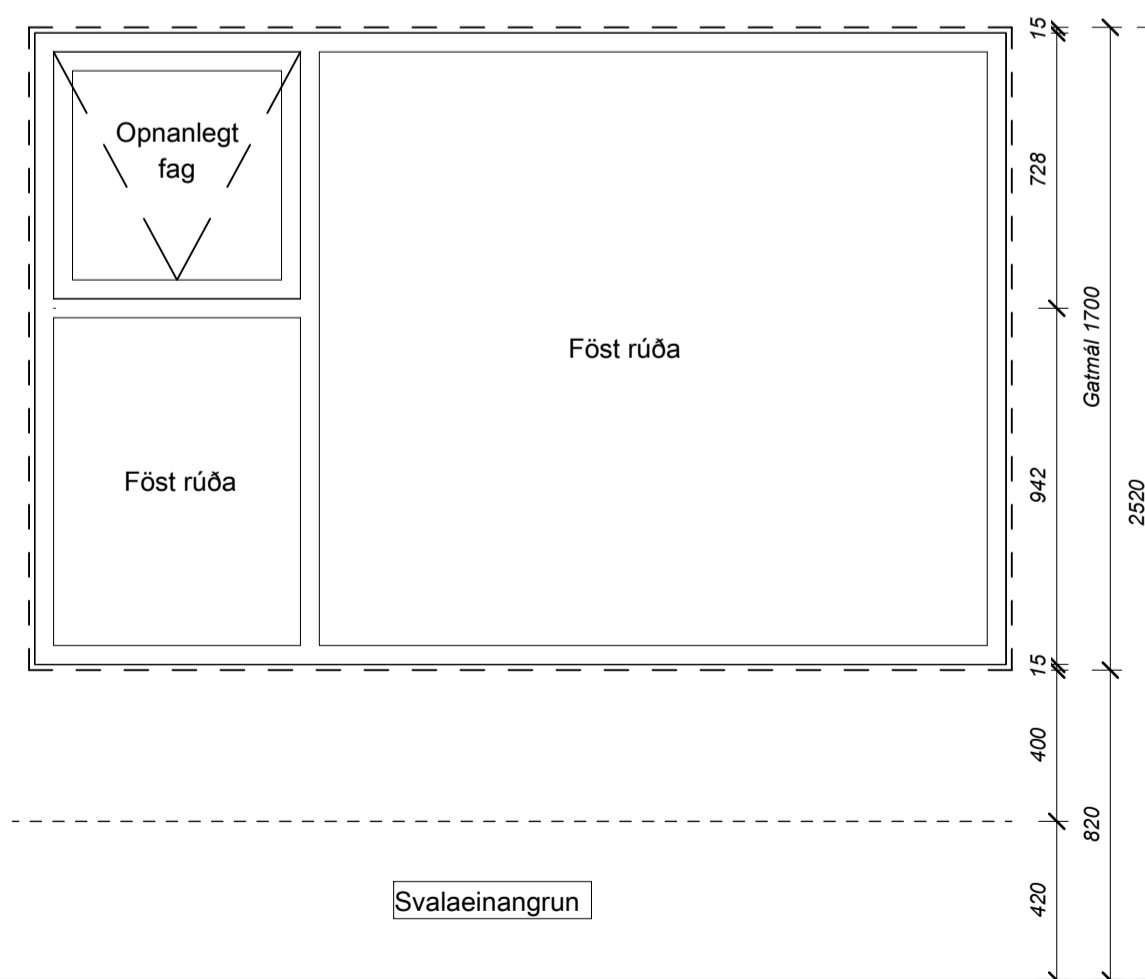
G-10 (Rw + Ctr = 26dB)



G-11 (Rw + Ctr = 26dB)



G-12 (Rw + Ctr = 26dB)



SK

Svalaeinangrun

Svalaeinangrun

Svalaeinangrun

Svalaeinangrun

BRUNAHÖNNUDUR

ELDVARNAREFTIRLIT

SKÝRINGAR

Gluggar eru ál/tré gluggar eða áklæddir timburgluggar. Prófilar eru sýndir á táknrænan hátt og er útfærsla þeirra háð framleiðanda. Umferðarbreidd allra svalahurða skal vera minnst 0,80 m. skv. byggingarreglugerð. Umferðarbreidd allra útihurða skal vera minnst 0,83 m. skv. byggingarreglugerð. Stærð glugga/hurða miðast við ísett eftirá. Málsetningar eru til viðmiðunar, mál skal takast á staðnum. Litur glugga/hurða að innan er RAL9010 og litur að utan er RAL9005.

LYKILMYND

BREYTING

BREYTING	DAGSETNING	TEIKN.
e:		
d:		
c:		
b:	Hljóðkröfum breytt	25.08.2023 HB
a:	G10 breyttur	29.06.2023 HB

BAUGHAMAR 1 (MHL.01)

HAFNARFJÖRDUR
VERKTEIKNING
GLUGGAYFIRLIT

VERK
21-655
BLAD
AV-4001

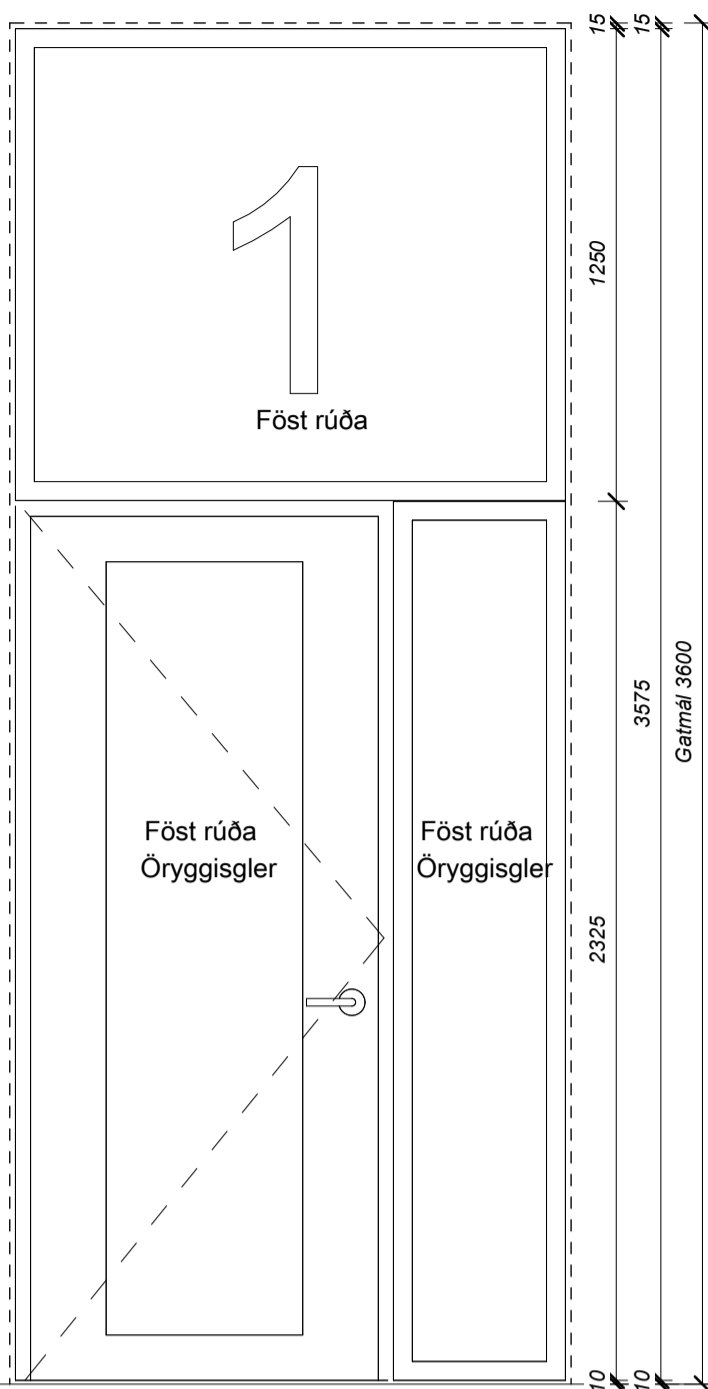
REYKJAVÍK 01.06.2023
BREYTT 25.08.2023
HANNAD HB/GÖE TEIKNAD HB/GÖE YFIRFARID JEJ
KVARDI HÖNNUNARSTJÓRI
SAMPYKKT Jóhann Einar Jónsson
Kt. 090982-3549



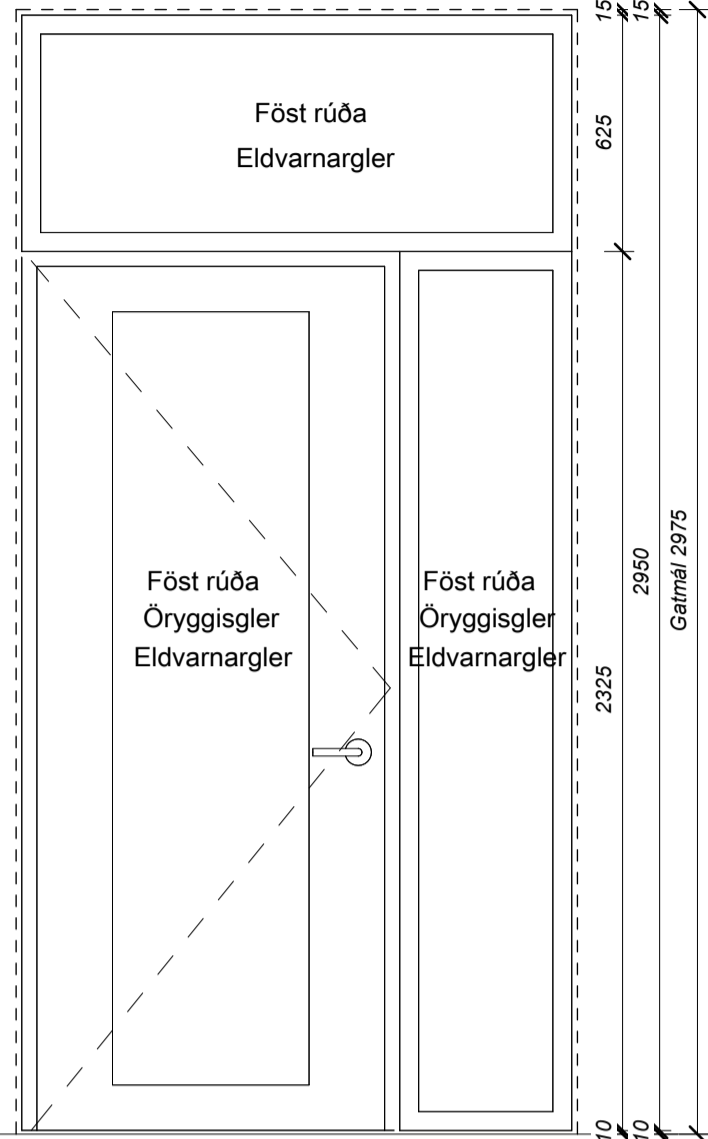
SUDURLANDSBRÁUT 20 108 REYKJAVÍK
KAUPANGI VIB MYRARVEG 600 AKUREYRI
NETFONG: teikna@teikna.is

SÍMI 552 8740
SÍMI 461 5508
VEFFANG: teikna.is

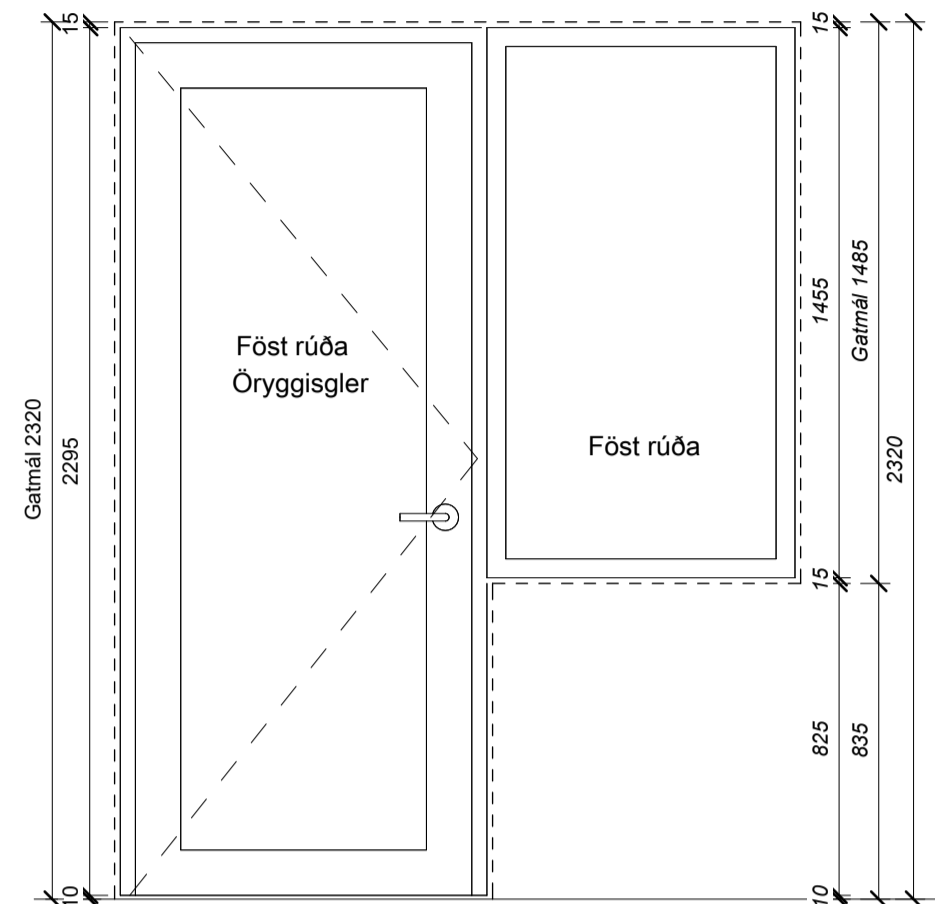
GH-1a (Rw = 29dB), opnast inn



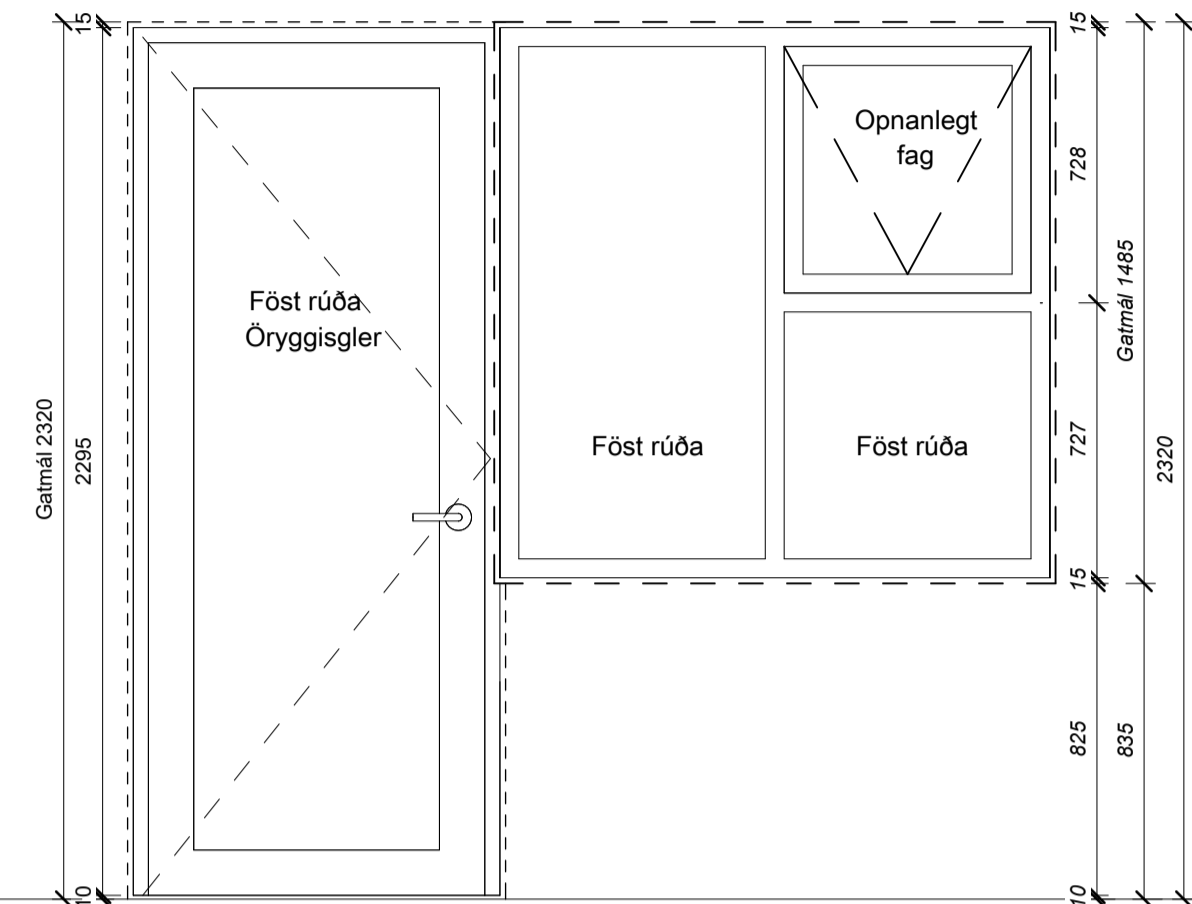
GH-1b (innihurð) (Rw = 29dB), opnast út (Ei_z30cs)



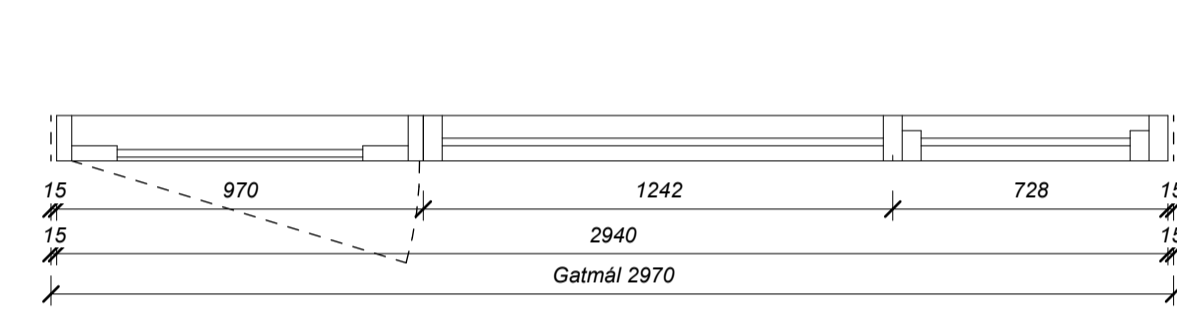
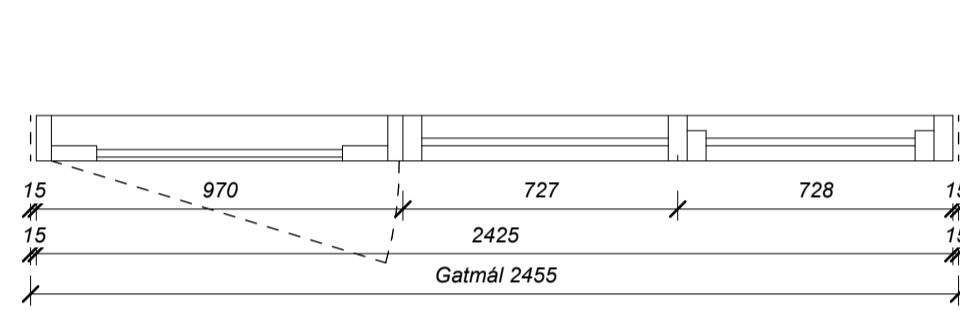
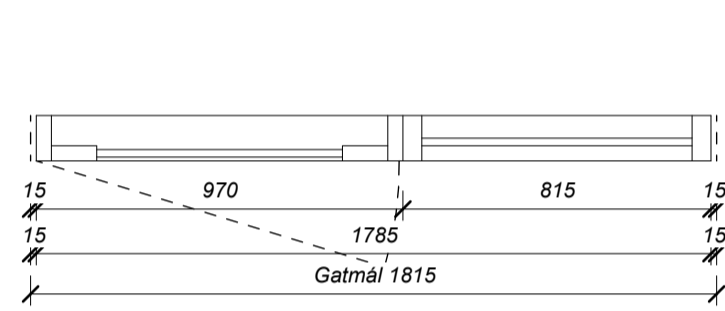
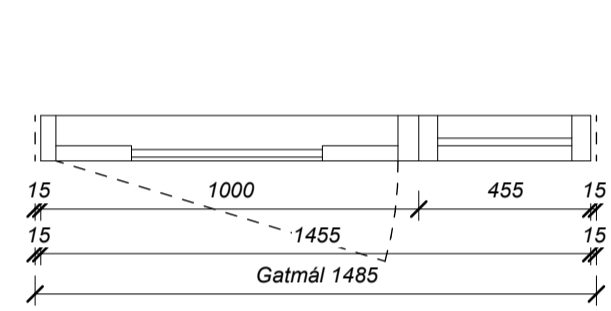
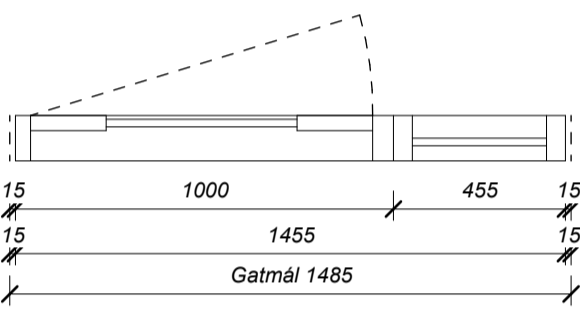
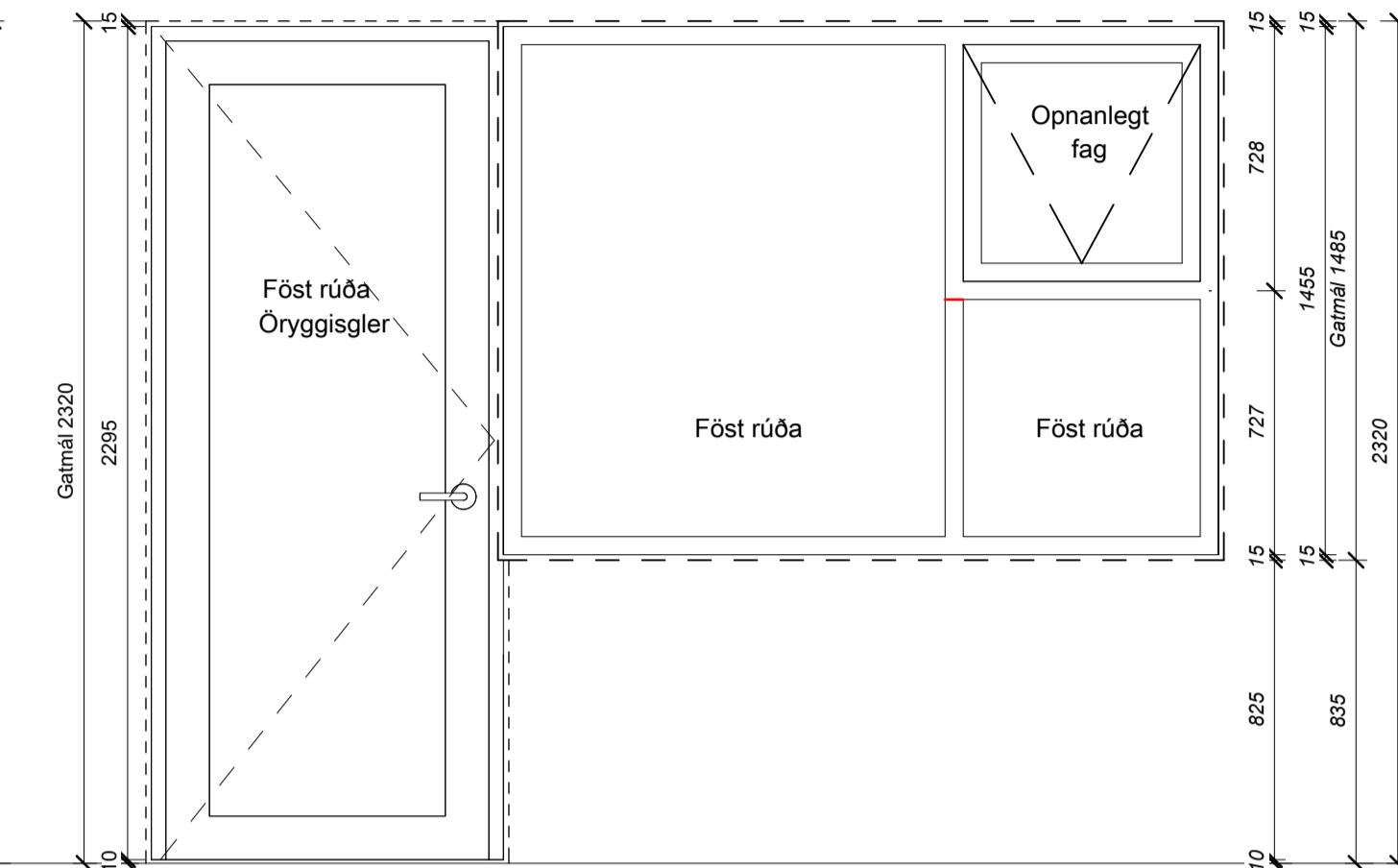
GH-2 (Rw + Ctr = 36dB), opnast út



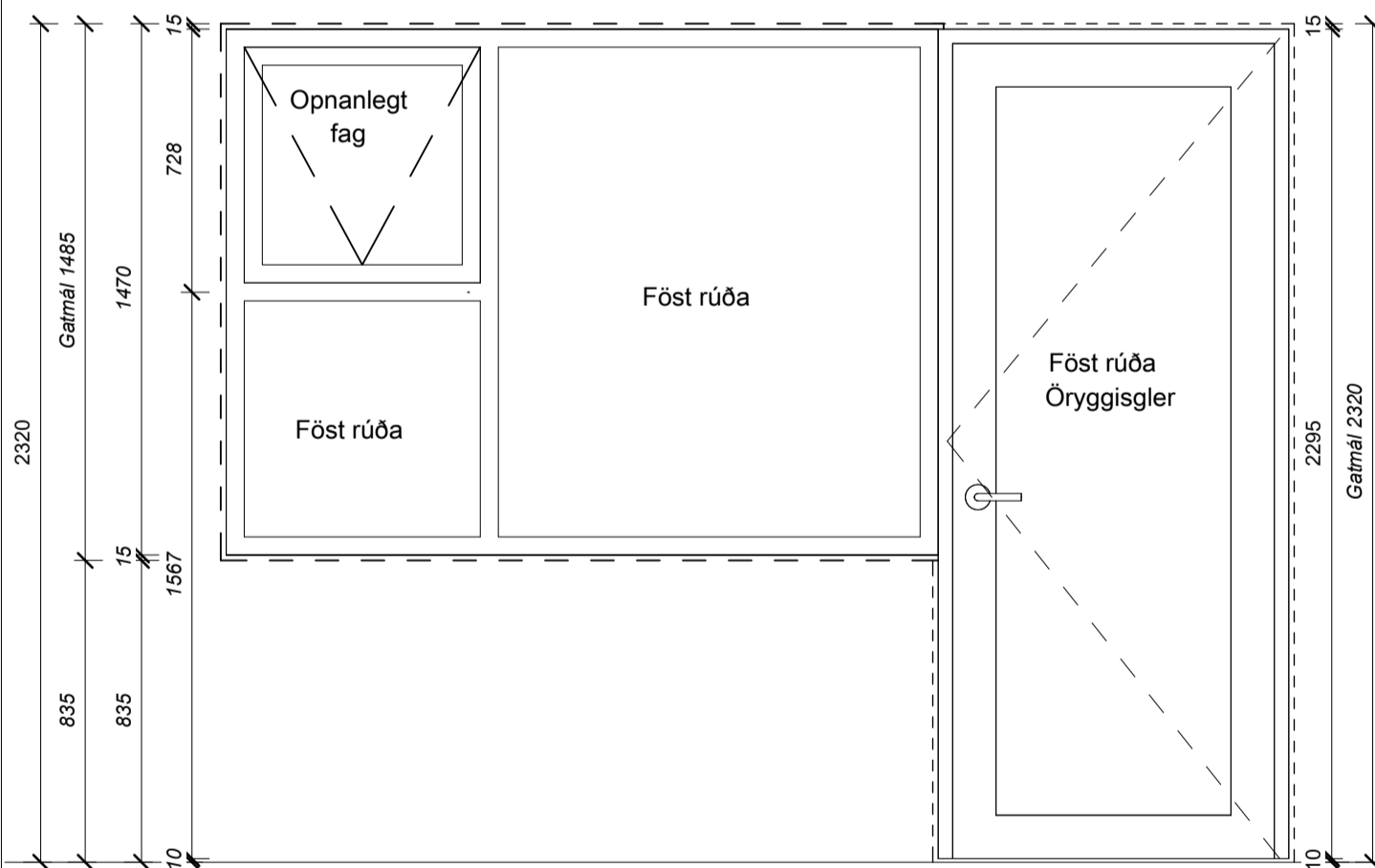
GH-3 (Rw + Ctr = 26dB), opnast út



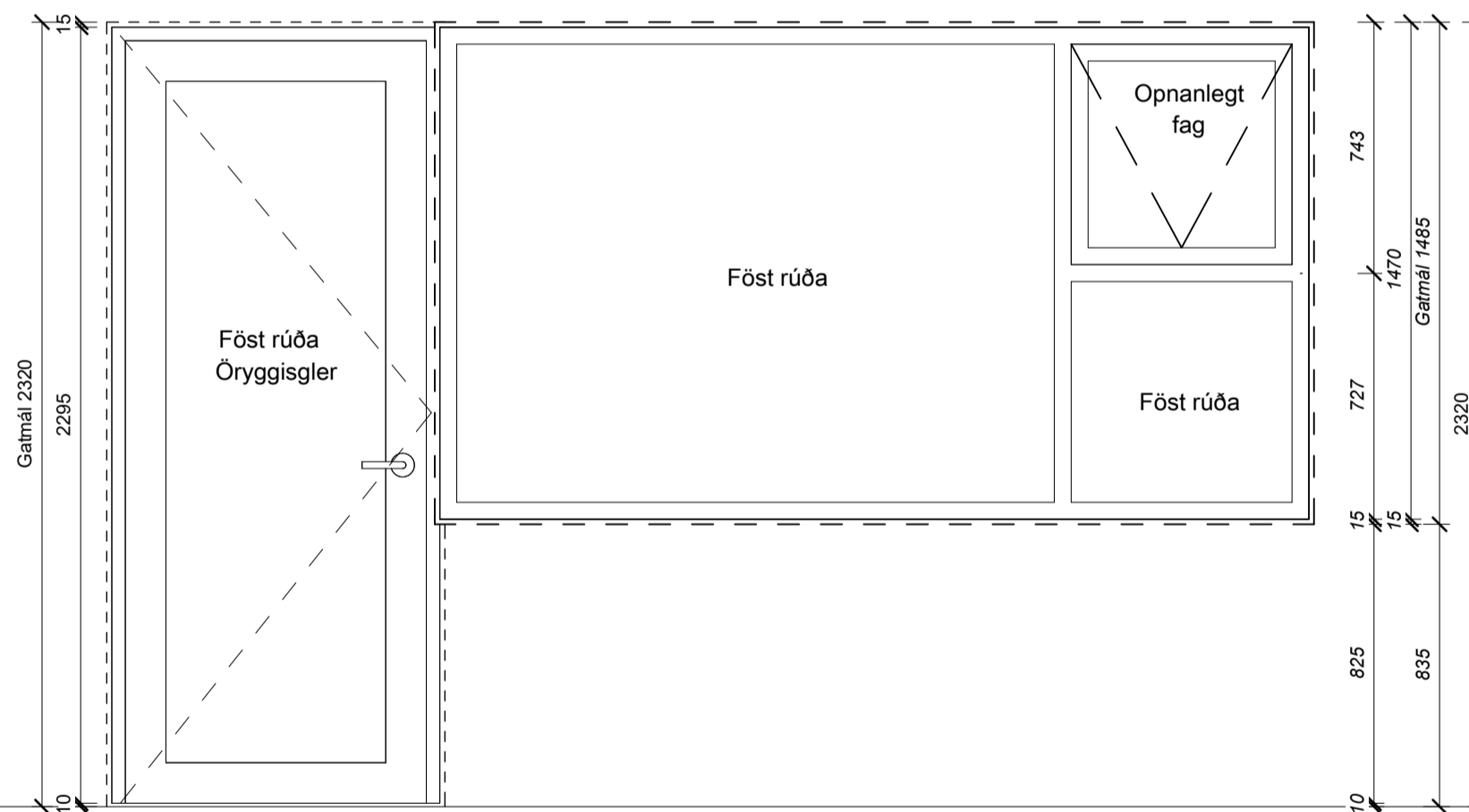
GH-4 (Rw + Ctr = 26dB), opnast út



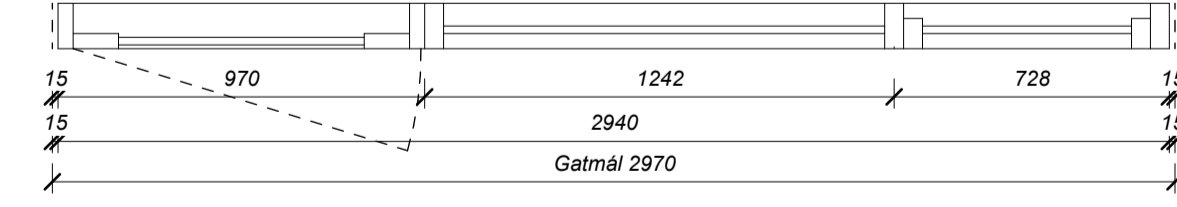
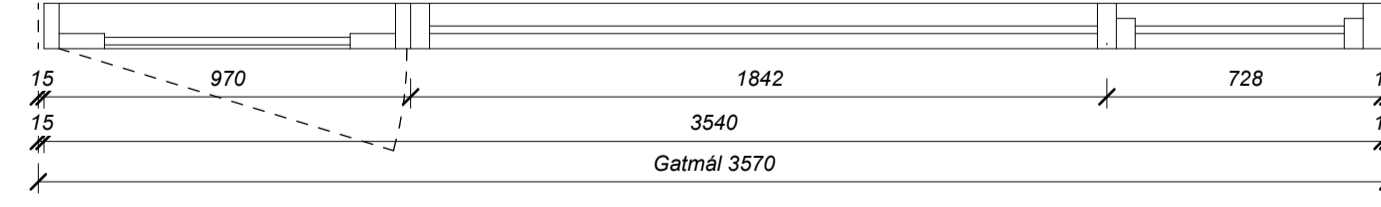
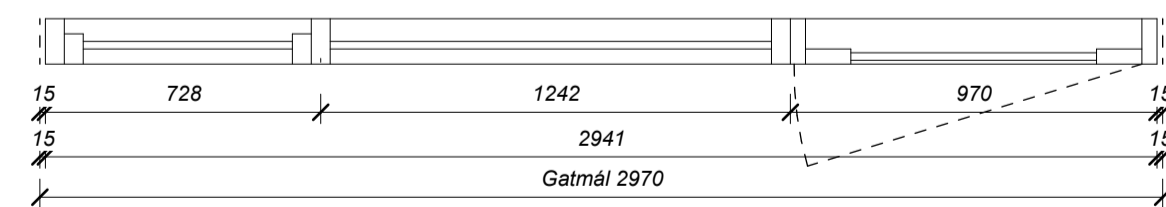
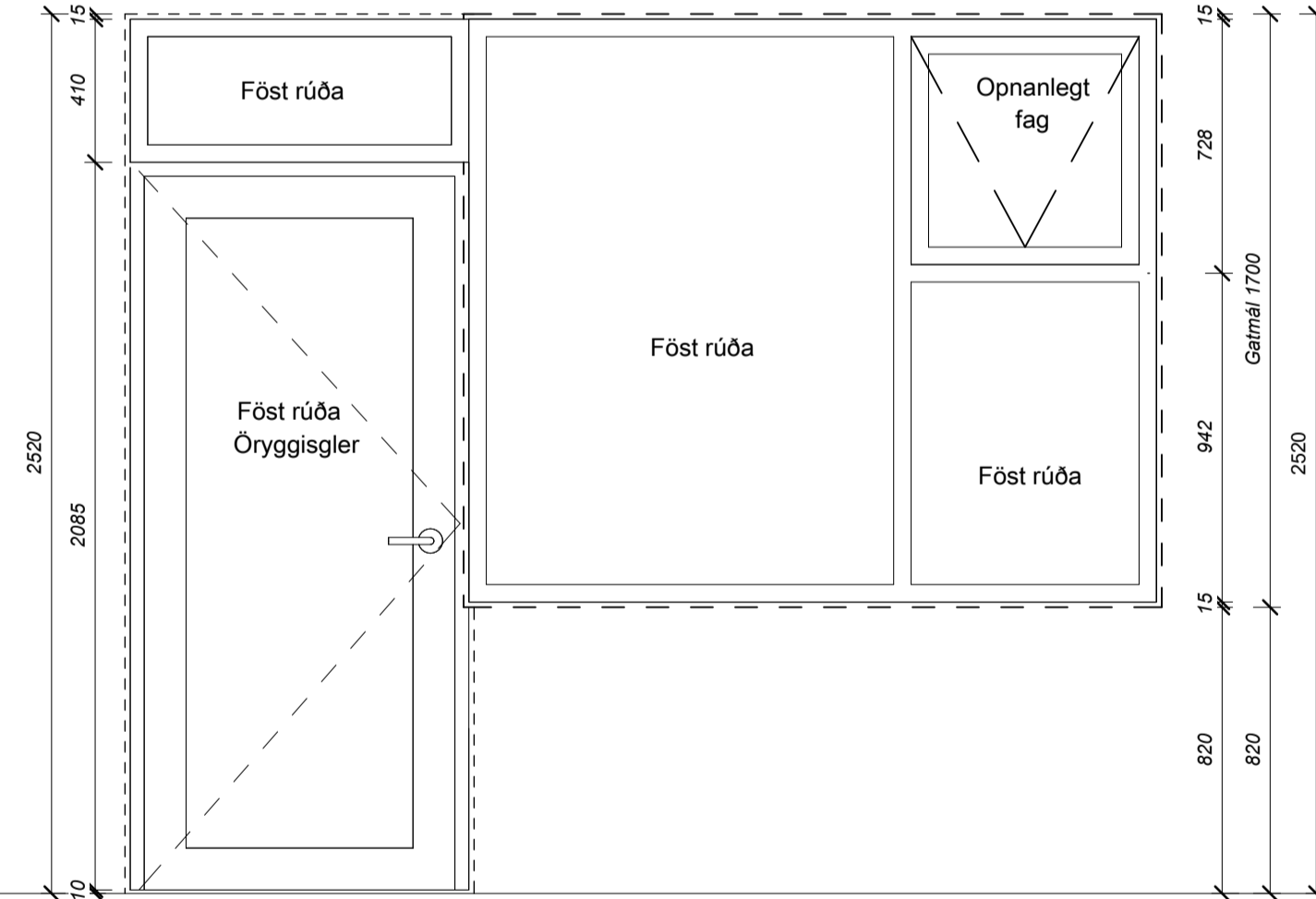
GH-5 (Rw + Ctr = 26dB), opnast út



GH-6 (Rw + Ctr = 32dB), opnast út



GH-7 (Rw + Ctr = 26dB), opnast út

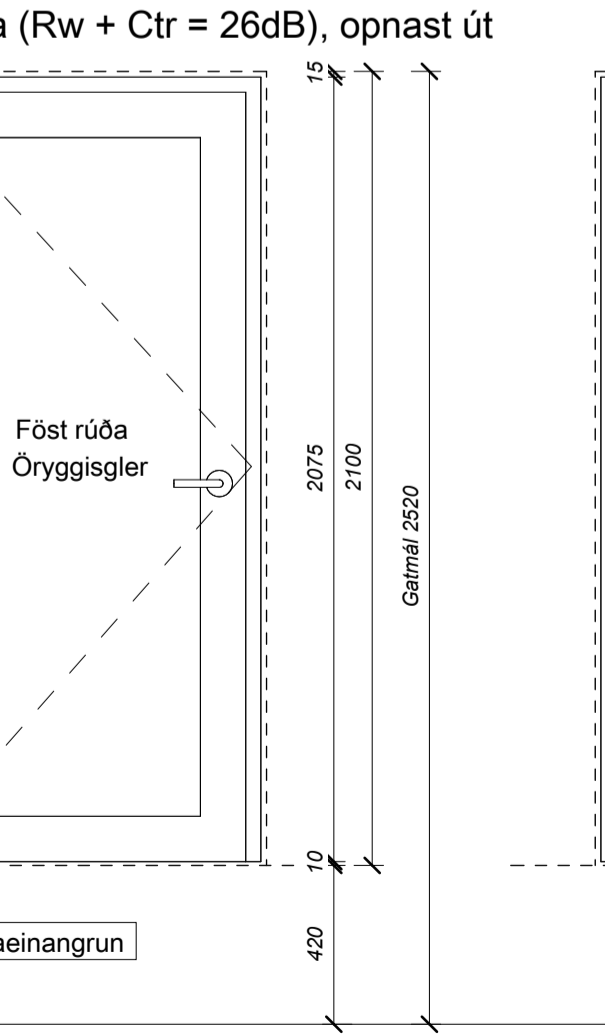
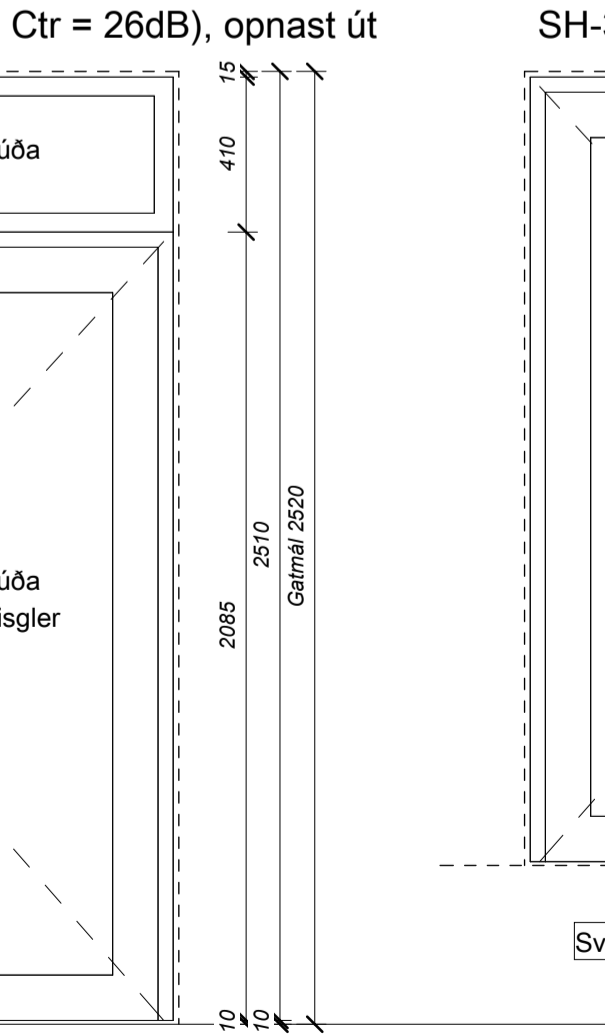
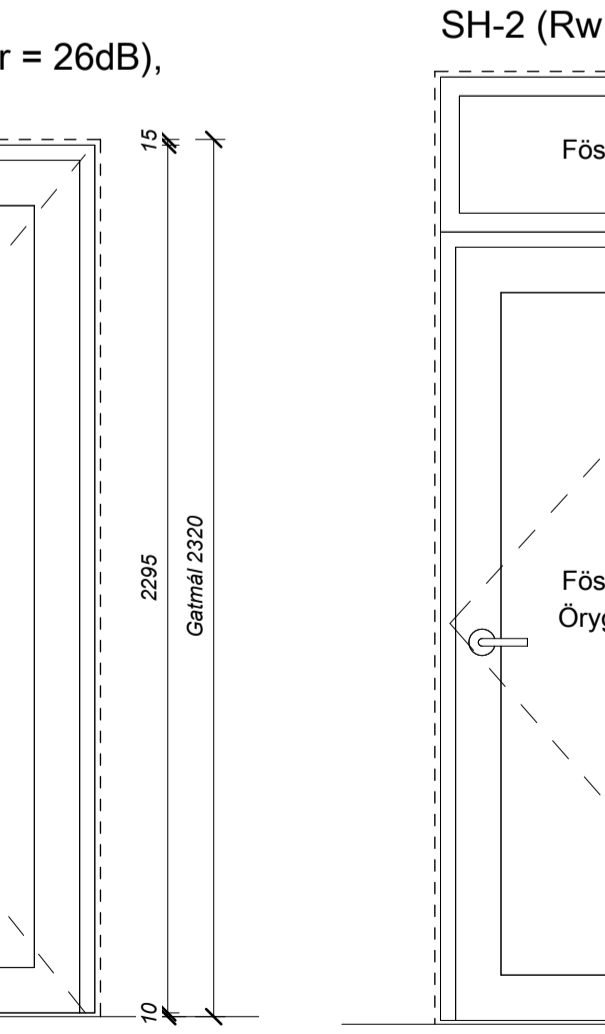
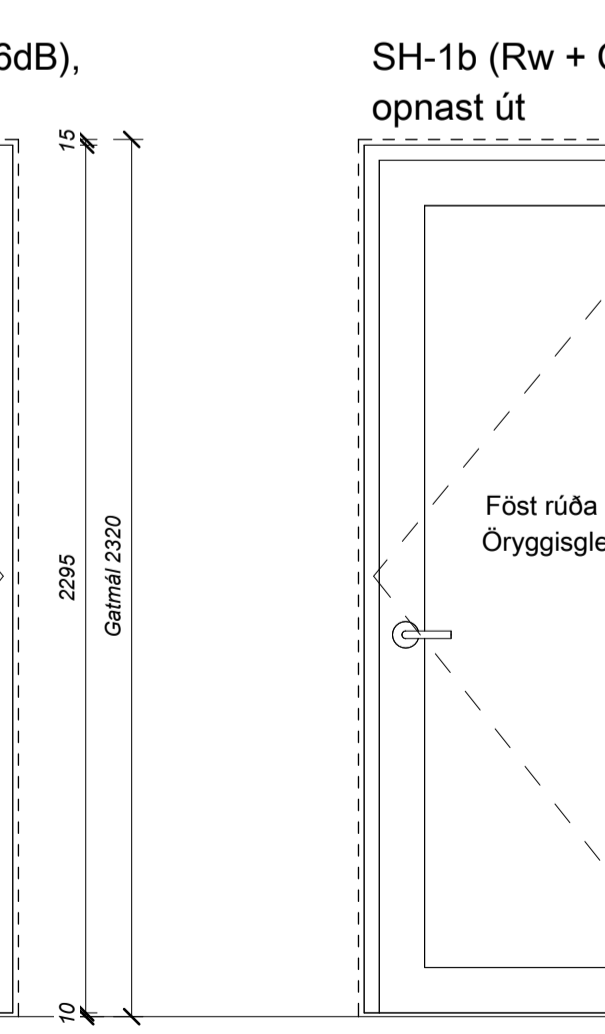
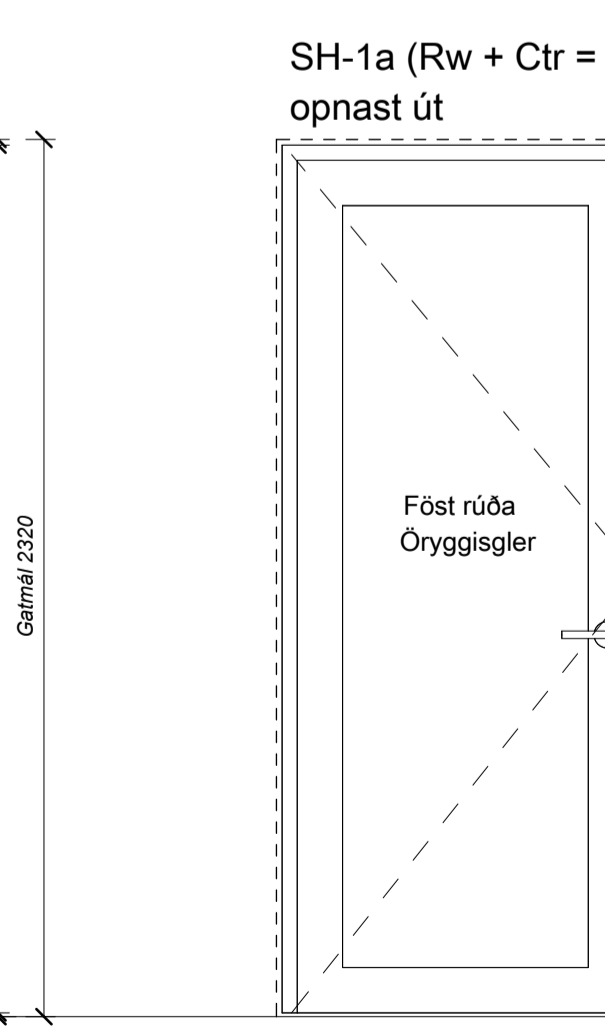
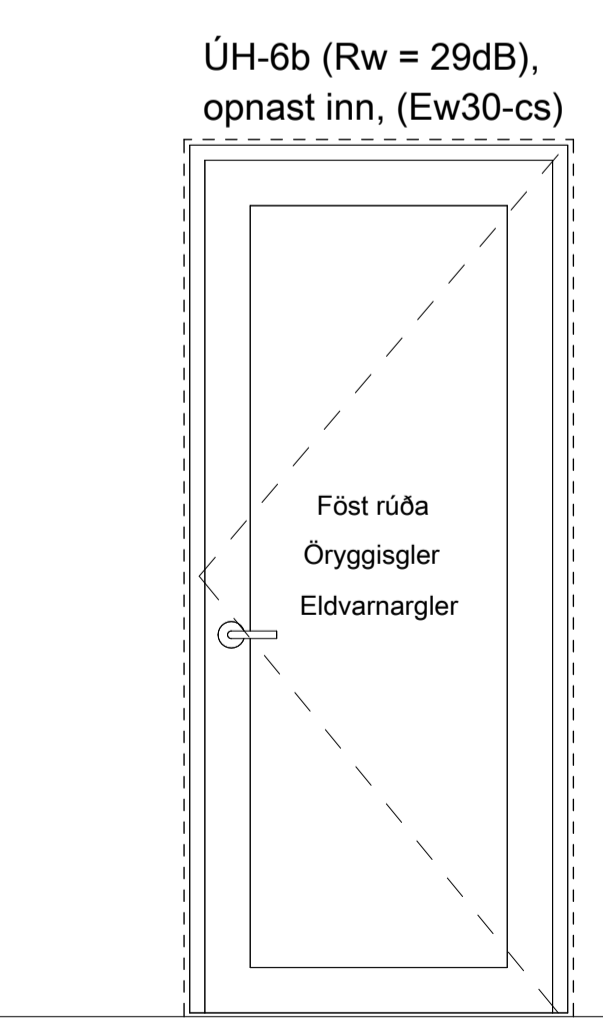
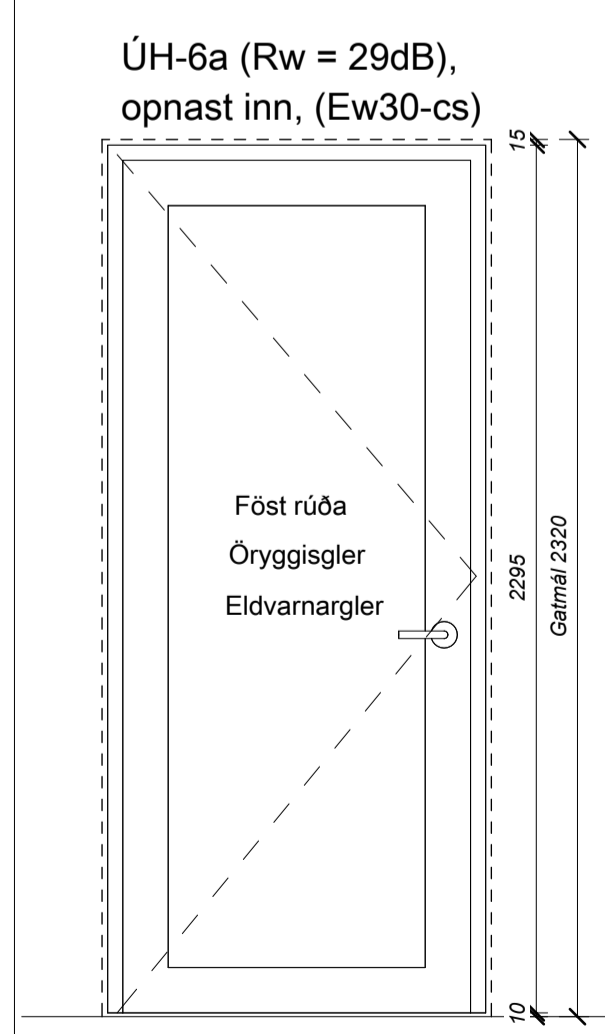
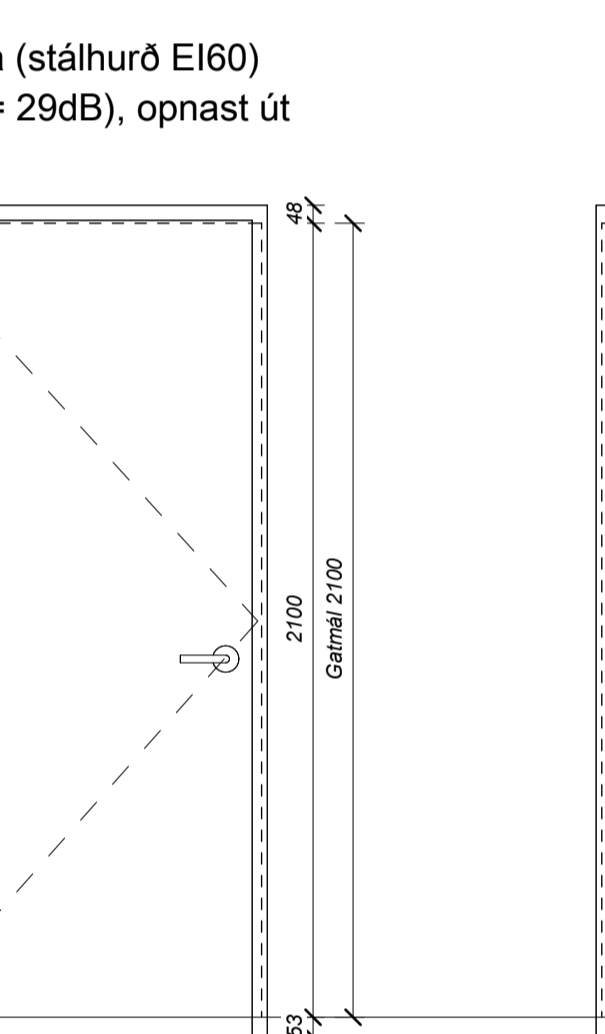
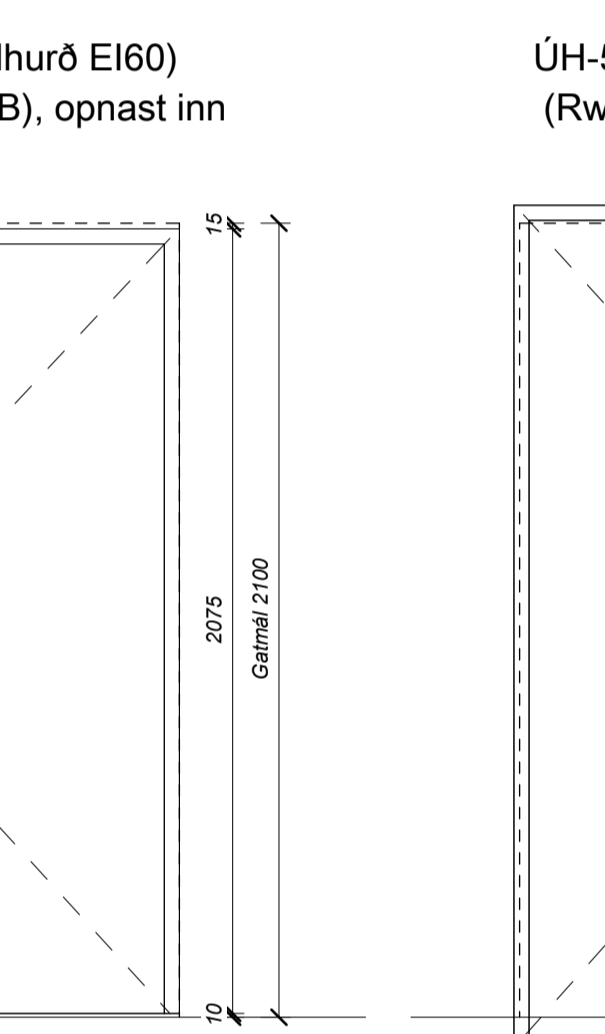
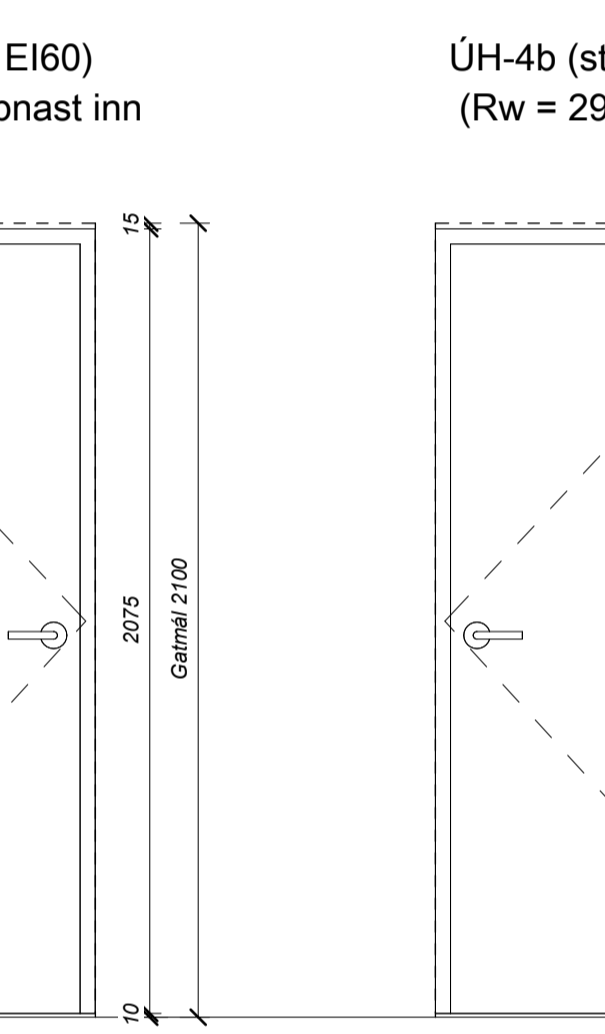
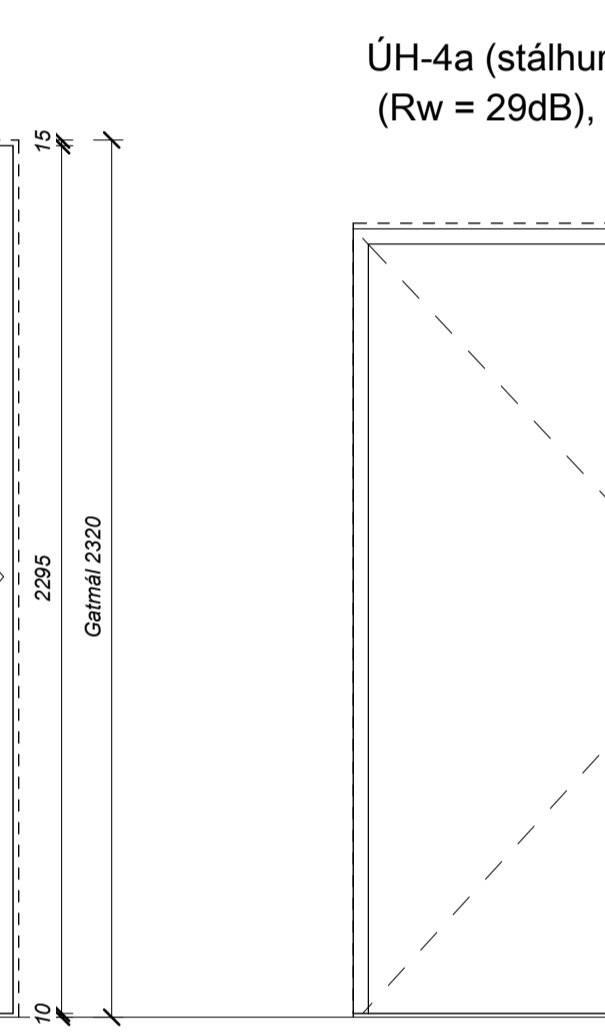
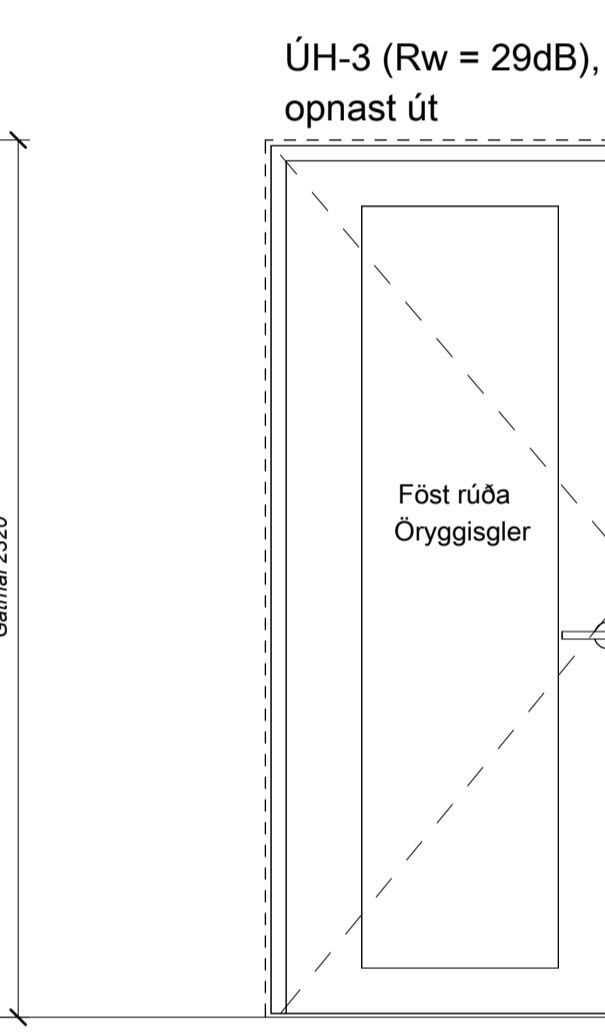
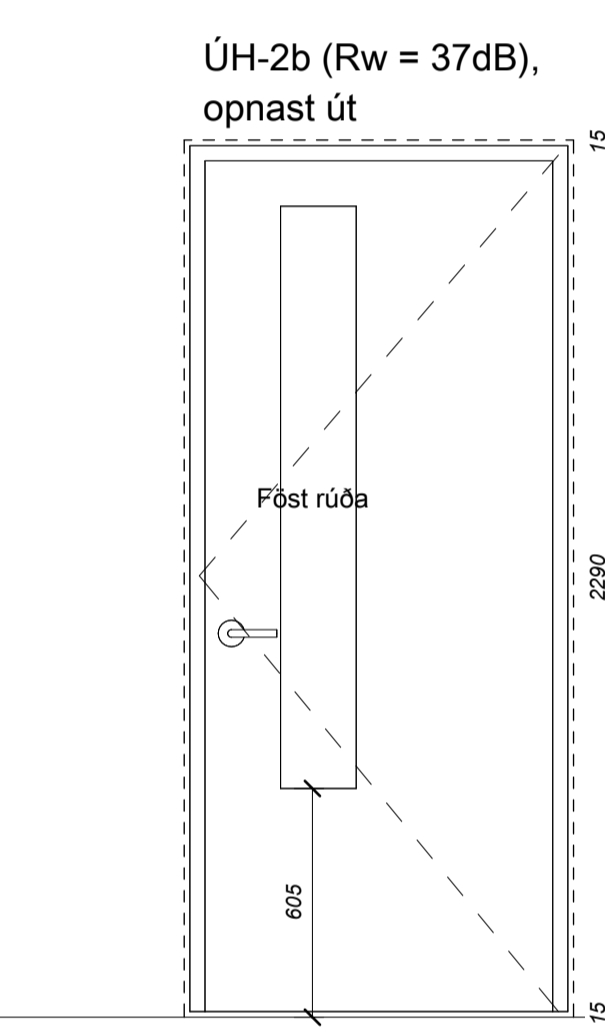
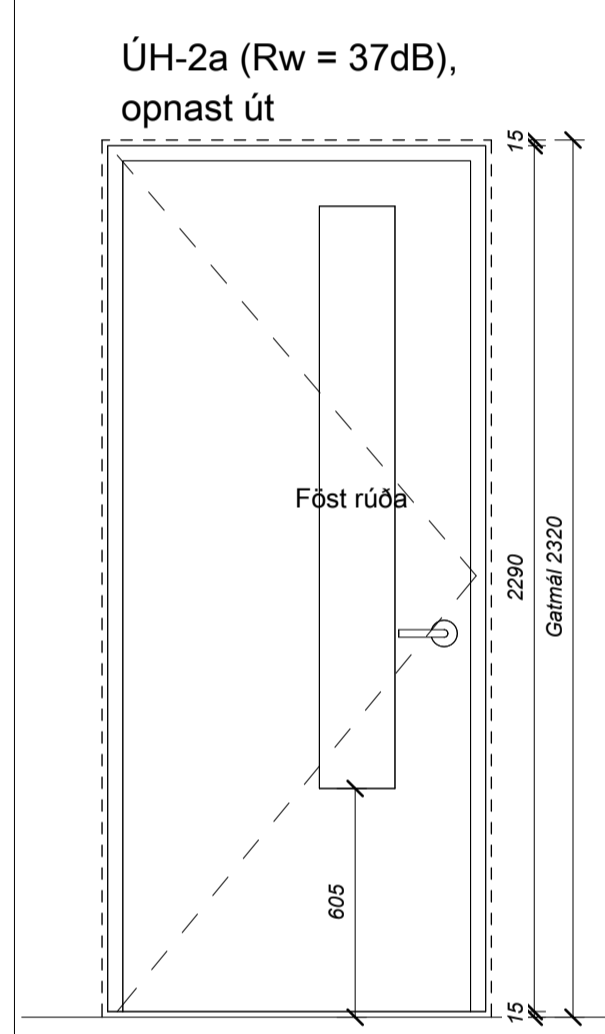
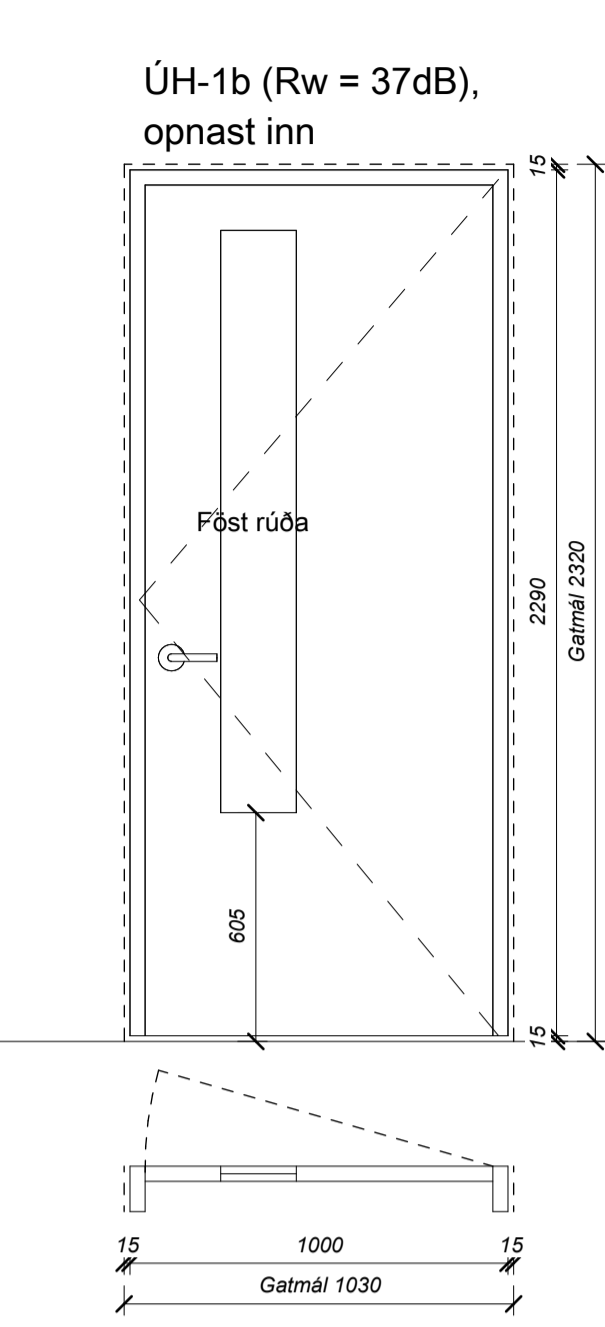
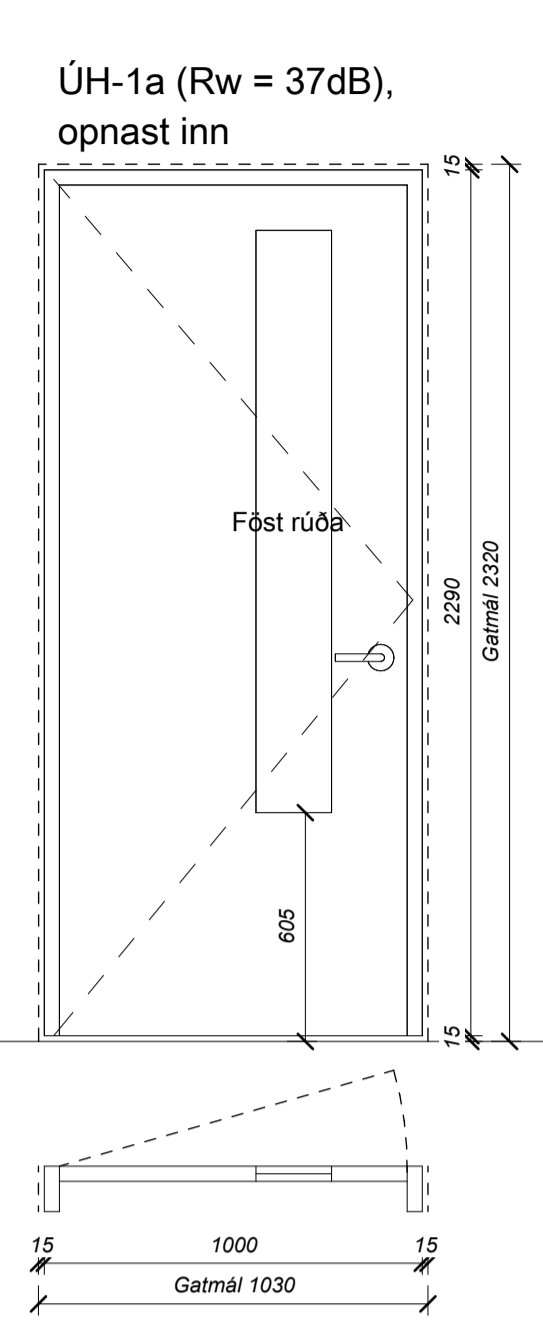
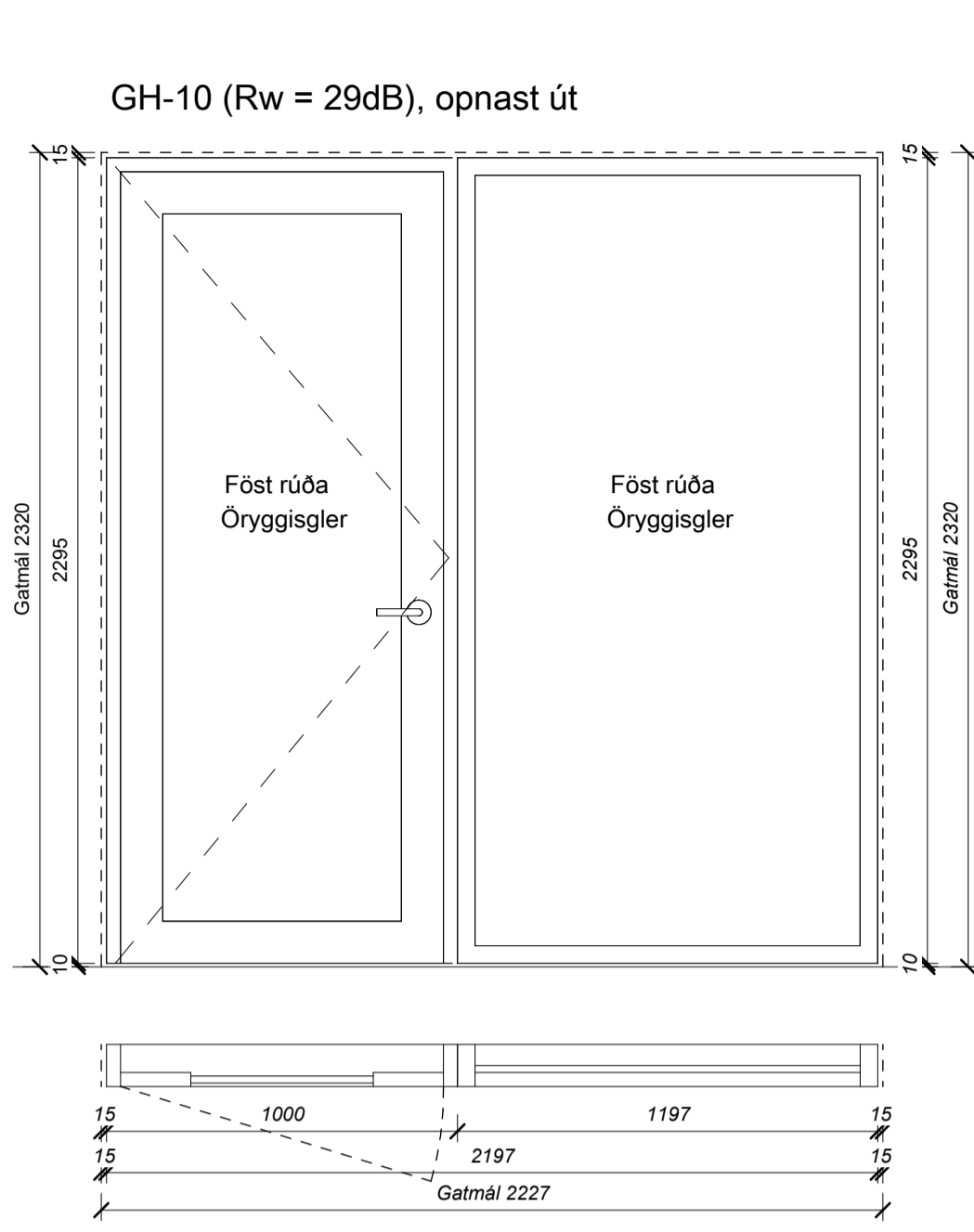
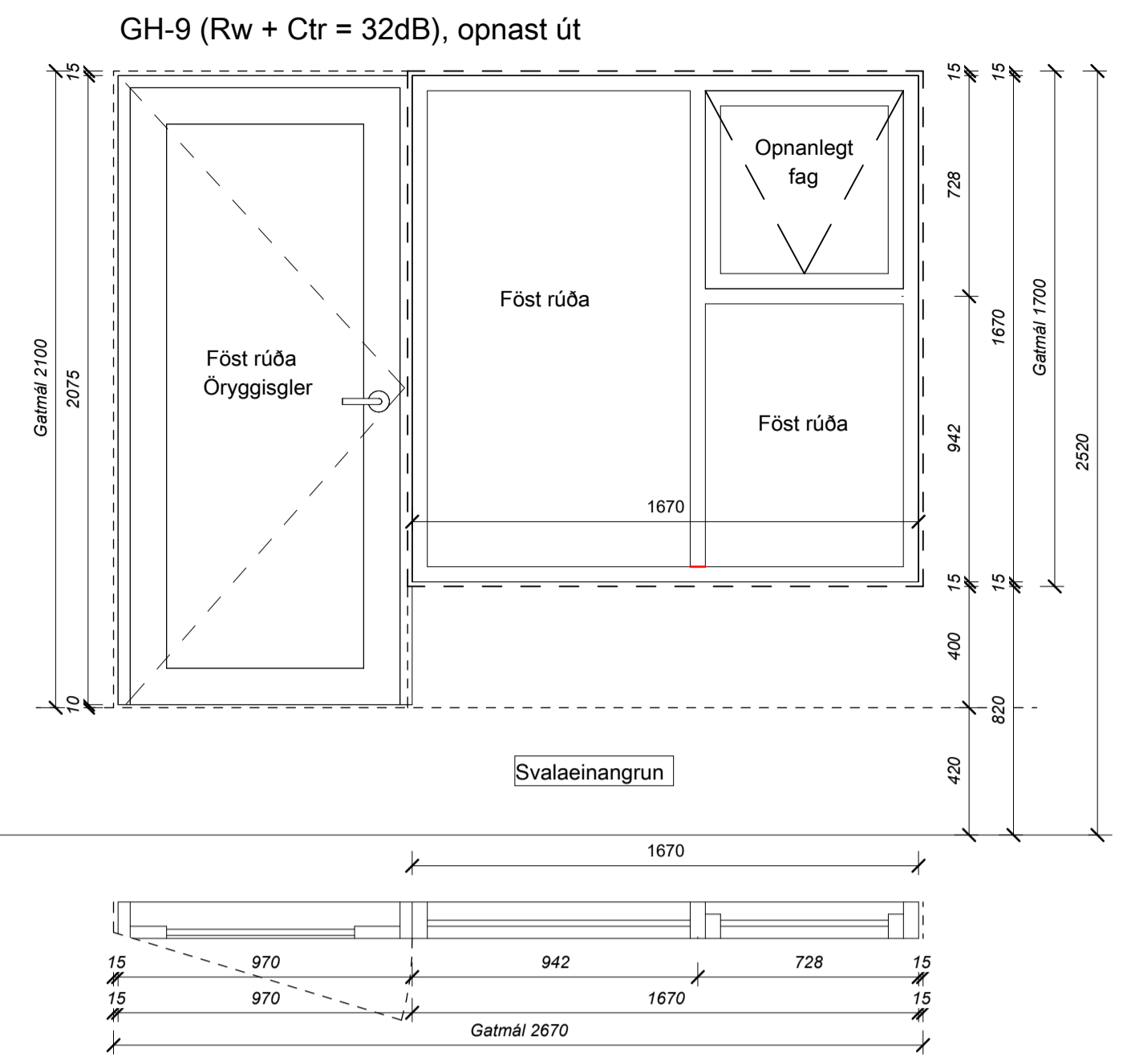
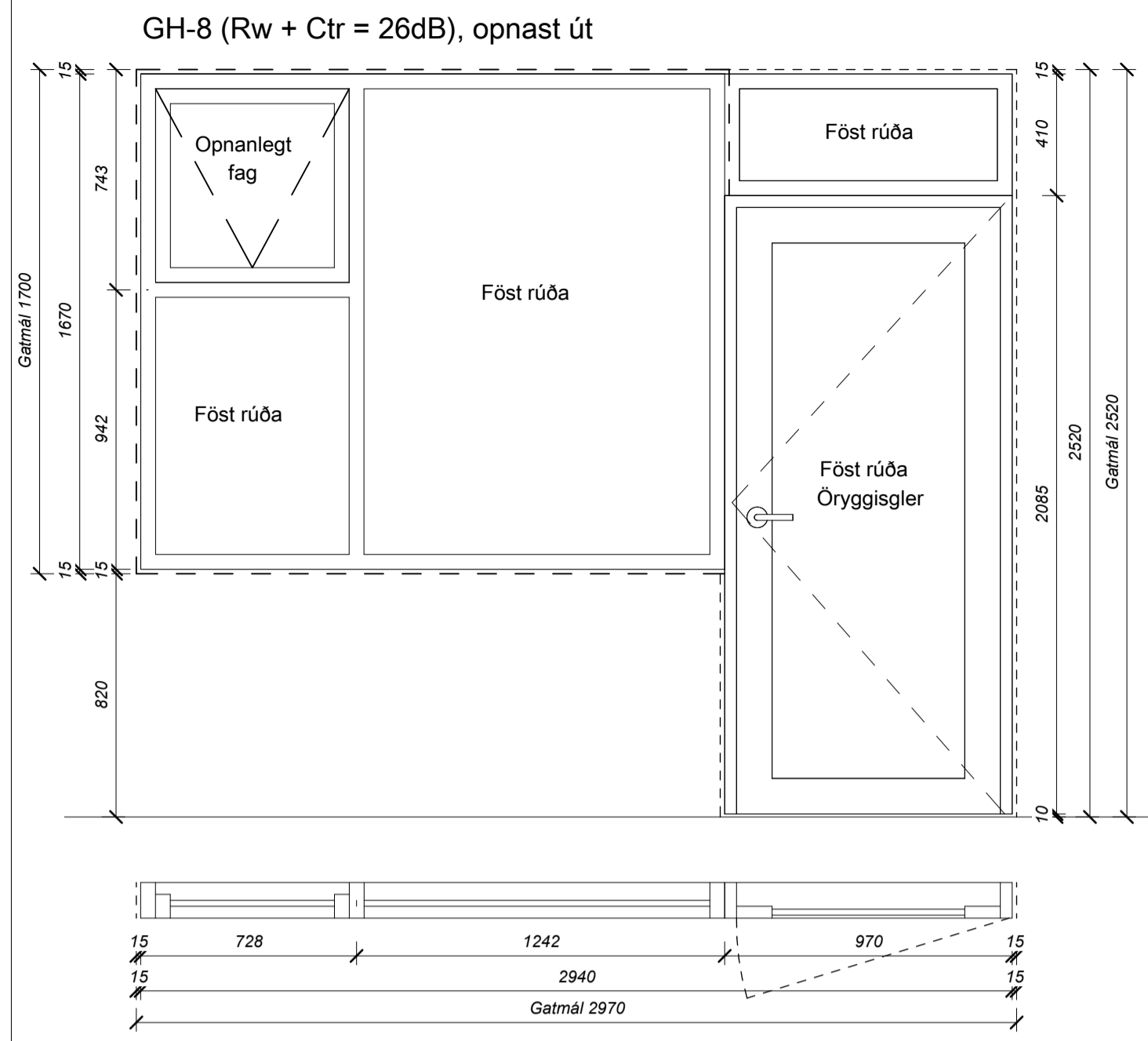


BRUNAHÖNNUÐUR
ELDVARNAREFTIRLIT
SKÝRINGAR
Gluggar eru ál/tré gluggar eða áklæddir timburgluggar. Prófilar eru sýndir á táknaðan hátt og er útfærsla þeirra háð framleiðanda. Umferðarbreidd allra svalahurða skal vera minnst 0,80 m. skv. byggingarreglugerð. Umferðarbreidd allra útihurða skal vera minnst 0,83 m. skv. byggingarreglugerð. Stærð glugga/hurða miðast við ísett eftirá. Málsetningar eru til viðmiðunar, mál skal takast á staðnum Litur glugga/hurða að innan er RAL9010 og litur að utan er RAL9005.

LYKILMYND

BREYTING	DAGSETNING	TEIKN.
e:		
d:		
c:		
b:		
a: Hljóðkröfum breytt	25.08.2023	HB

BAUGHAMAR 1 (MHL.01)		VERK 21-655
HAFNARFJÖRÐUR		BILAD
VERKTEIKNING		AV-4002
GLUGGAYFIRLIT		
REYKJAVÍK 01.06.2023	BREYTT 25.08.2023	BREYTING a
HANNAD HB/GÖE	TEIKNAD HB/GÖE	YFIRFARID JEJ
KVARDI	BLADSTÆRD A1	
SAMPYKKT	HÖNNUNARSTJÓRI Jóhann Einar Jónsson Kt. 090982-3549	
SUDURLANDSBRÁUT 20 108 REYKJAVÍK SIMI 552 8740 KAUPANGI VÍÐ MYRARVEG 600 AKUREYRI SIMI 461 5508 NETFÖNG: teikna@teikna.is VEFFANG: teikna.is		



BRUNAHÖNNUÐUR

ELDVARNAREFTIRLIT

SKÝRINGAR

Gluggar eru ál/tré gluggar eða álklaeddir timburgluggar. Prófilar eru sýndir á táknrænan hátt og er útfærsla þeirra háð framleiðanda. Umferðarbreidd allra svalahurða skal vera minnst 0,80 m. skv. byggingarreglugerð. Umferðarbreidd allra útihurða skal vera minnst 0,83 m. skv. byggingarreglugerð. Stærð glugga/hurða miðast við ísett eftirá. Málsetningar eru til viðmiðunar, mál skal takast á staðnum. Lítur glugga/hurða að innan er RAL9010 og lítur að utan er RAL9005.

LYKILMYND

BREYTING	DAGSETNING	TEIKN.
e:		
d:		
c:		
b:		
a:	Hljóðkröfum breytt	25.08.2023 HB

BAUGHAMAR 1 (MHL.01)

HAFNARFJÖRÐUR

VERKTEIKNING

GLUGGA- OG HURÐAYFIRLIT

VERK 21-655
BLAÐ AV-4003

REYKJAVÍK 01.06.2023

BREYTT 25.08.2023 BREYTING a

HANNAÐ HB/GÖE TEIKNAD HB/GÖE YFIRFARID JEJ

KVARDI HÖNNUNARSTJÓRI A1

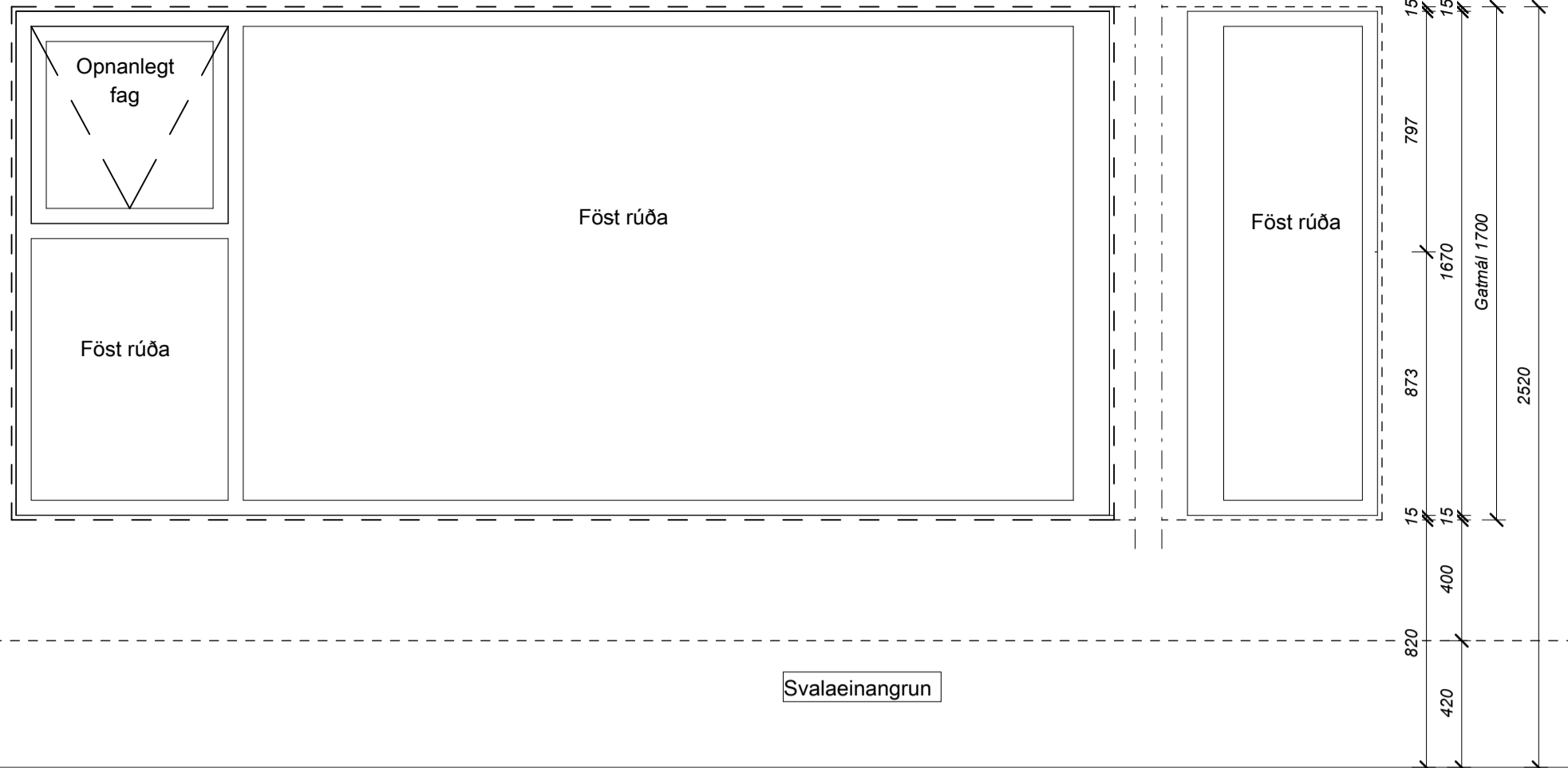
SAMPYKKT HÖNNUNARSTJÓRI Jóhann Einar Jónsson Kt. 090982-3549

TEIKNA
TEIKNISTOFA ARKITEKTA

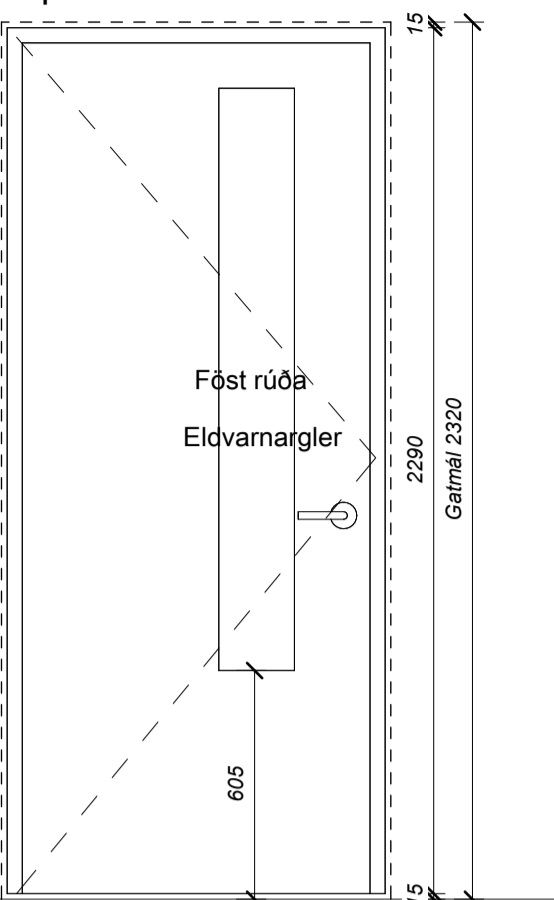
SUDURLANDSBRÁUT 20 108 REYKJAVÍK SÍMI 552 8740
KAUPANGI VÍÐ MYRARVEG 600 AKUREYRI SÍMI 461 5508
NETFONG: teikna@teikna.is VEFFANG: teikna.is

HG-5 (Rw + Ctr = 26dB)

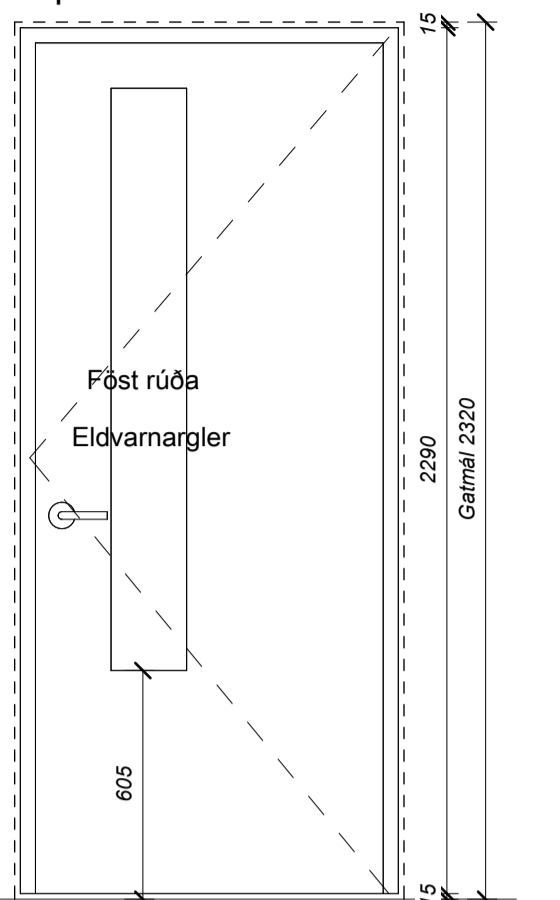
ATH. Málsetningar á horngluggum skulu ávallt takast á staðnum án ábyrgðar arkitekta.



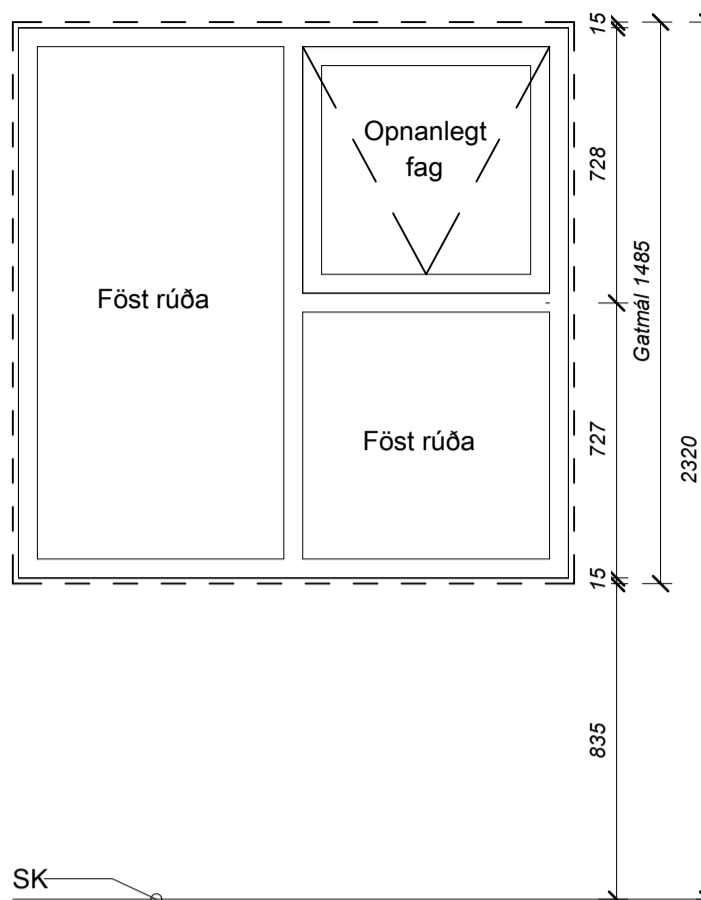
ÚH-1c (Rw = 37dB) EW30-CS_a, opnast inn



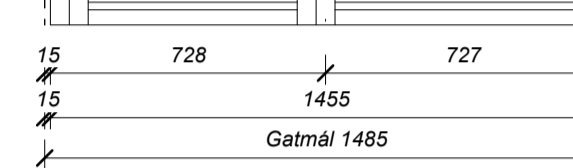
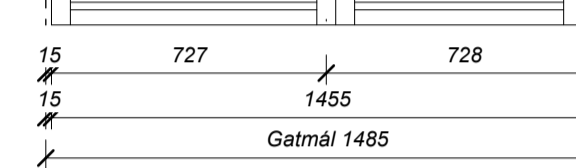
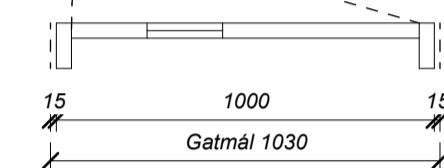
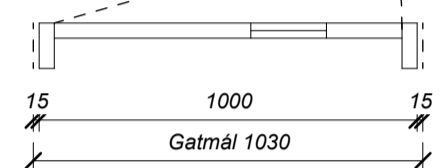
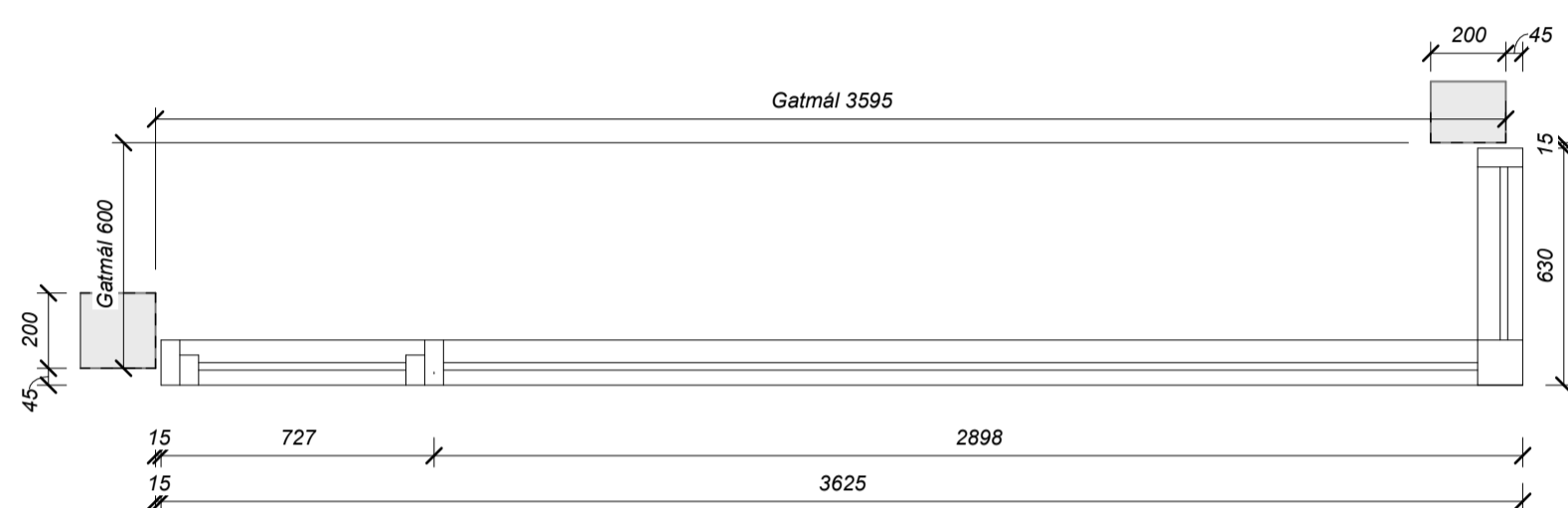
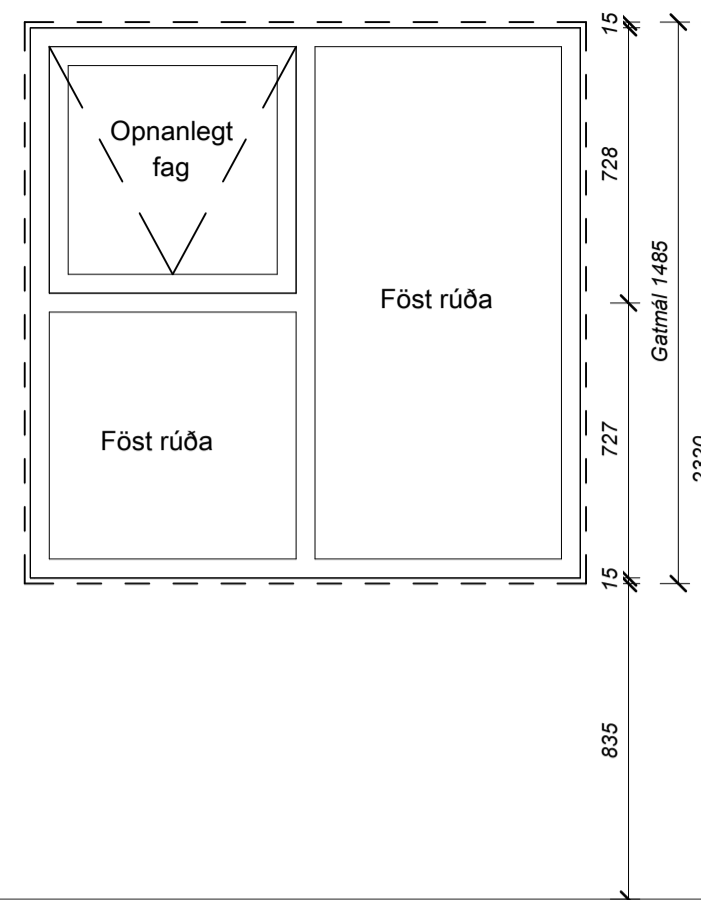
ÚH-1d (Rw = 37dB) EW30-CS_a, opnast inn



G-1c (Rw = 44dB)

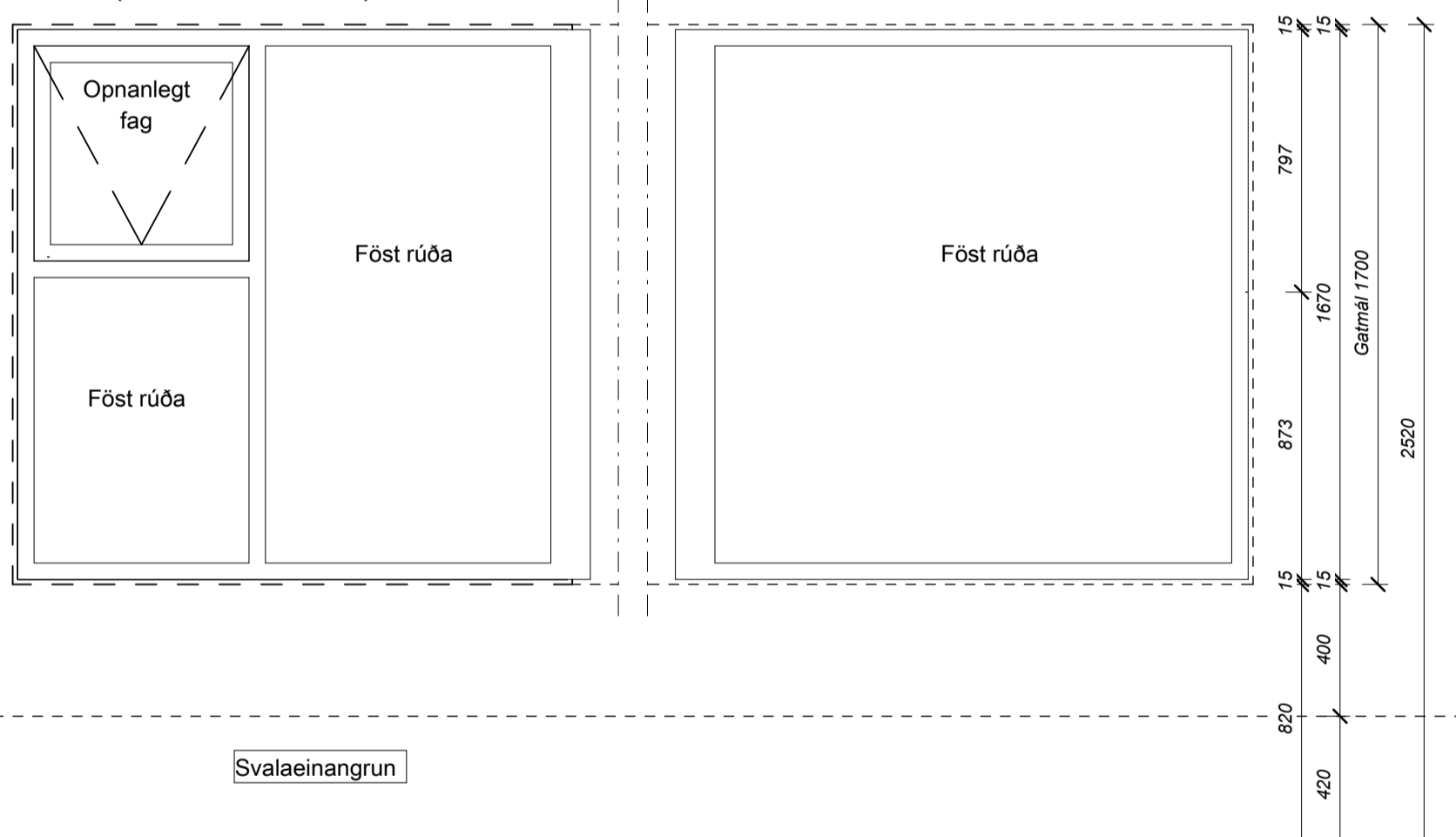


G-1d (Rw = 44dB)



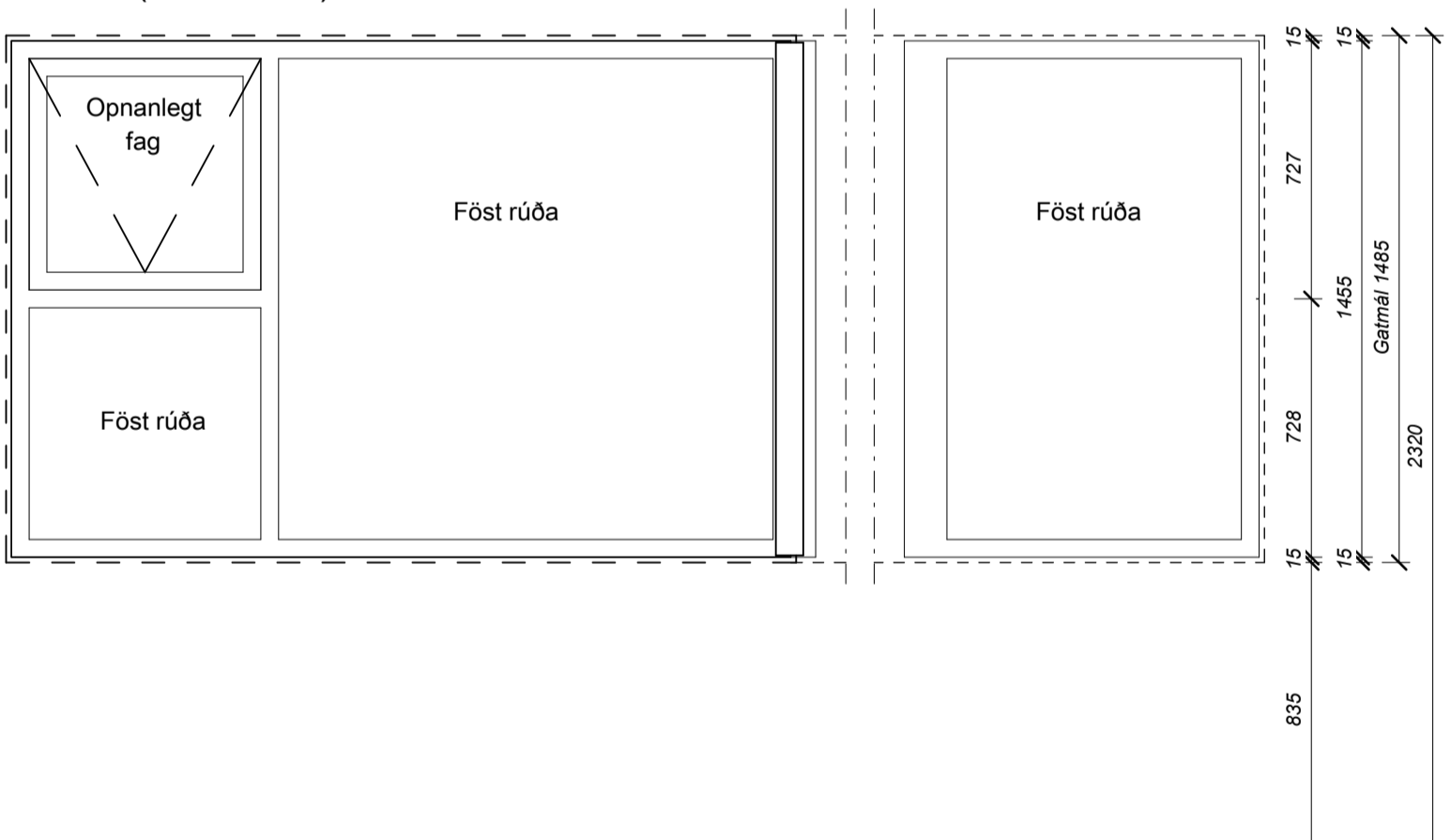
ATH. Málsetningar á horngluggum skulu ávallt takast á staðnum án ábyrgðar arkitekta.

HG-6 (Rw + Ctr = 32dB)

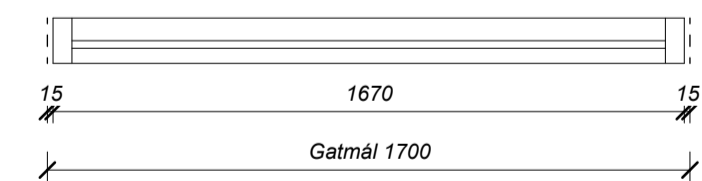
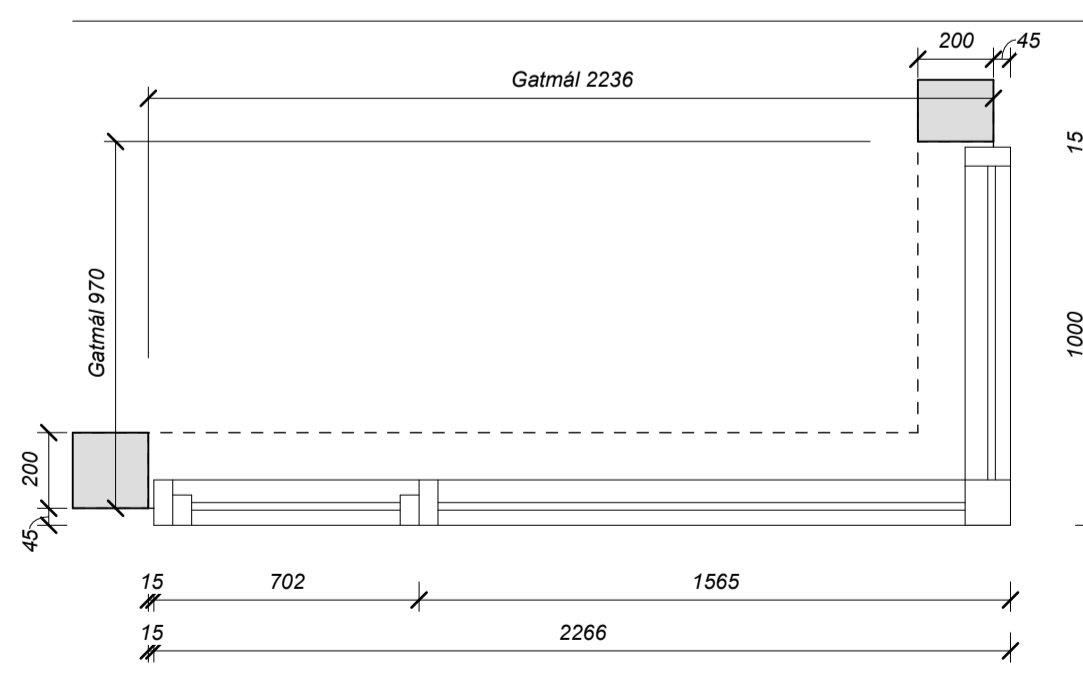
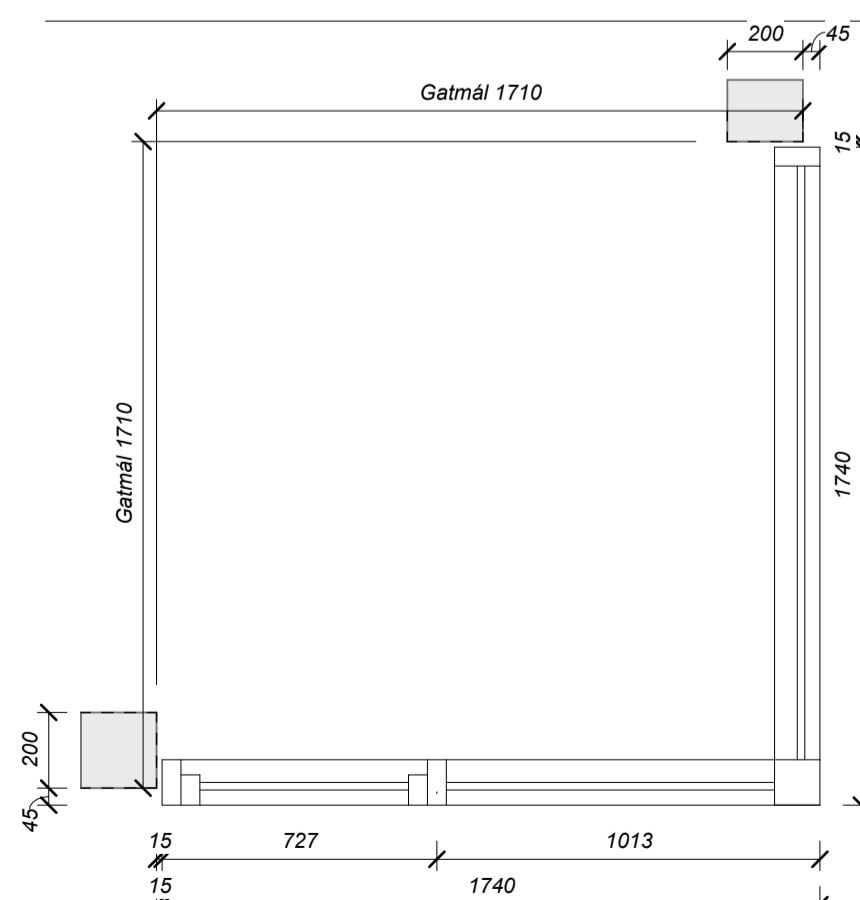
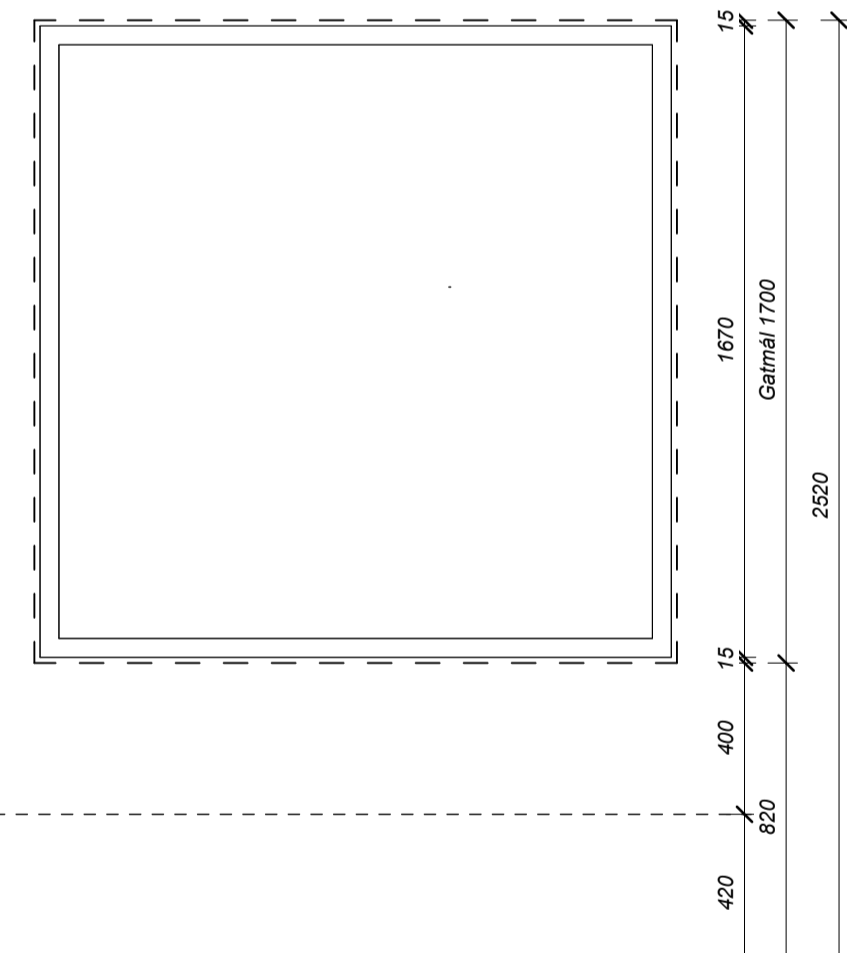


ATH. Málsetningar á horngluggum skulu ávallt takast á staðnum án ábyrgðar arkitekta.

HG-2b (Rw = 44dB)



G-15 (Rw + Ctr = 26dB)



BRUNAHÖNNUÐUR

ELDVARNAREFTIRLIT

SKÝRINGAR
Gluggar eru ál/tré gluggar eða áíklæddir timburgluggar. Prófilar eru sýndir á táknrænan hátt og er útfærsla þeirra háð framleiðanda. Umferðarbreidd allra svalahurða skal vera minnst 0,80 m. skv. byggingarreglugerð. Umferðarbreidd allra útihurða skal vera minnst 0,83 m. skv. byggingarreglugerð. Stærð glugga/hurða miðast við ísett eftirá. Málsetningar eru til viðmiðunar, mál skal takast á staðnum. Lítur glugga/hurða að innan er RAL9010 og lítur að utan er RAL9005.

LYKILMYND

BREYTING	DAGSETNING	TEIKN.
e:		
d:		
c:		
b:		
a:	Hljóðkröfum breytt	25.08.2023 HB

BAUGHAMAR 1 (MHL.01)

HAFNARFJÖRÐUR
VERKTEIKNING
GLUGGAYFIRLIT

VERK 21-655
BLAD AV-4004

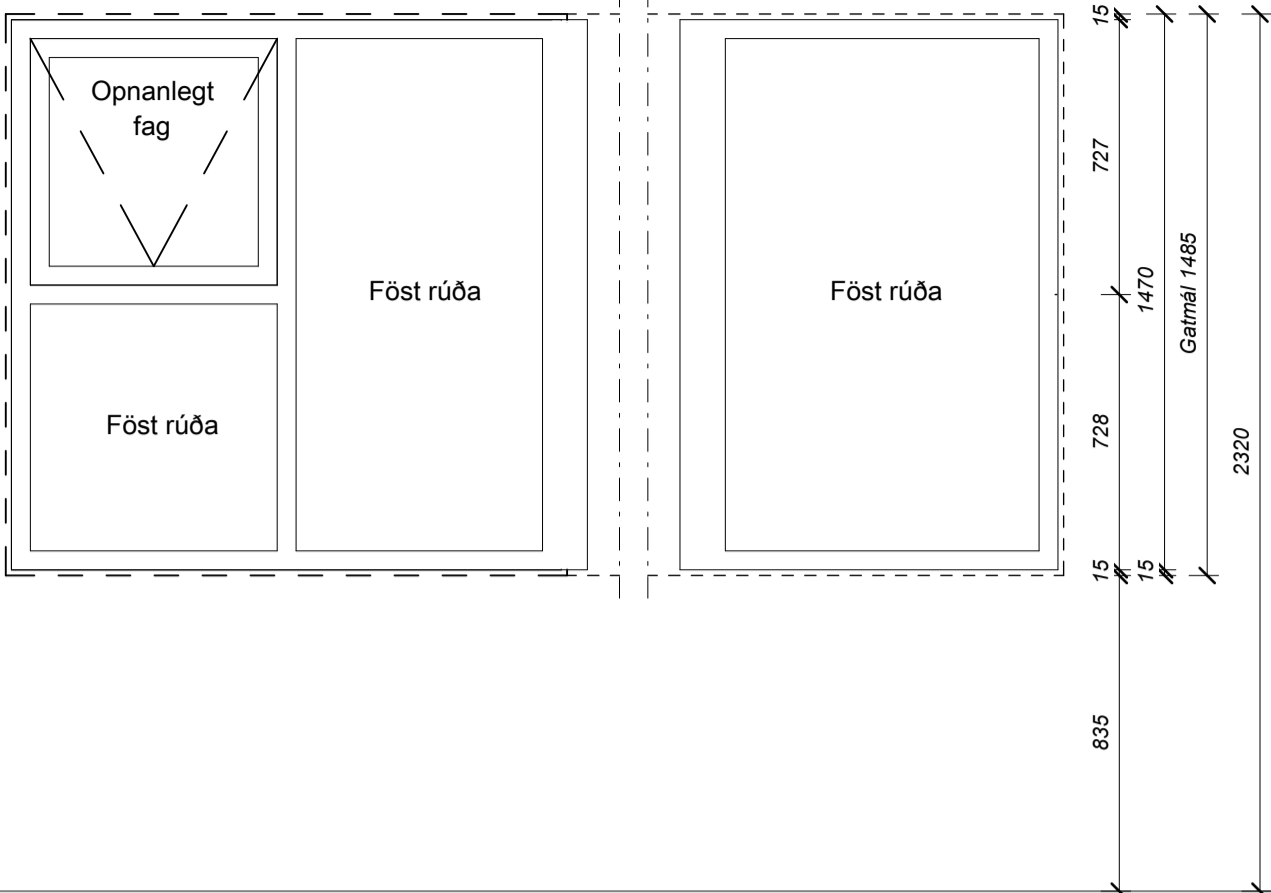
REYKJAVÍK 01.06.2023
BREYTT 25.08.2023 BREYTING a
HANNAD HB/GÖE TEIKNAD HB/GÖE YFIRFARID JEJ
KVARDI HÖNNUNARSTJÓRI A1
SAMPYKKT HÖNNUNARSTJÓRI Jóhann Einar Jónsson Kt. 090982-3549

TEIKNA
TEIKNISTOFA ARKITEKTA

SUDURLANDSBRÁUT 20 108 REYKJAVÍK SIMI 552 8740
KAUPANGI VÍÐ MYRARVEG 600 AKUREYRI SIMI 461 5508
NETFÖNG: teikna@teikna.is VEFFANG: teikna.is

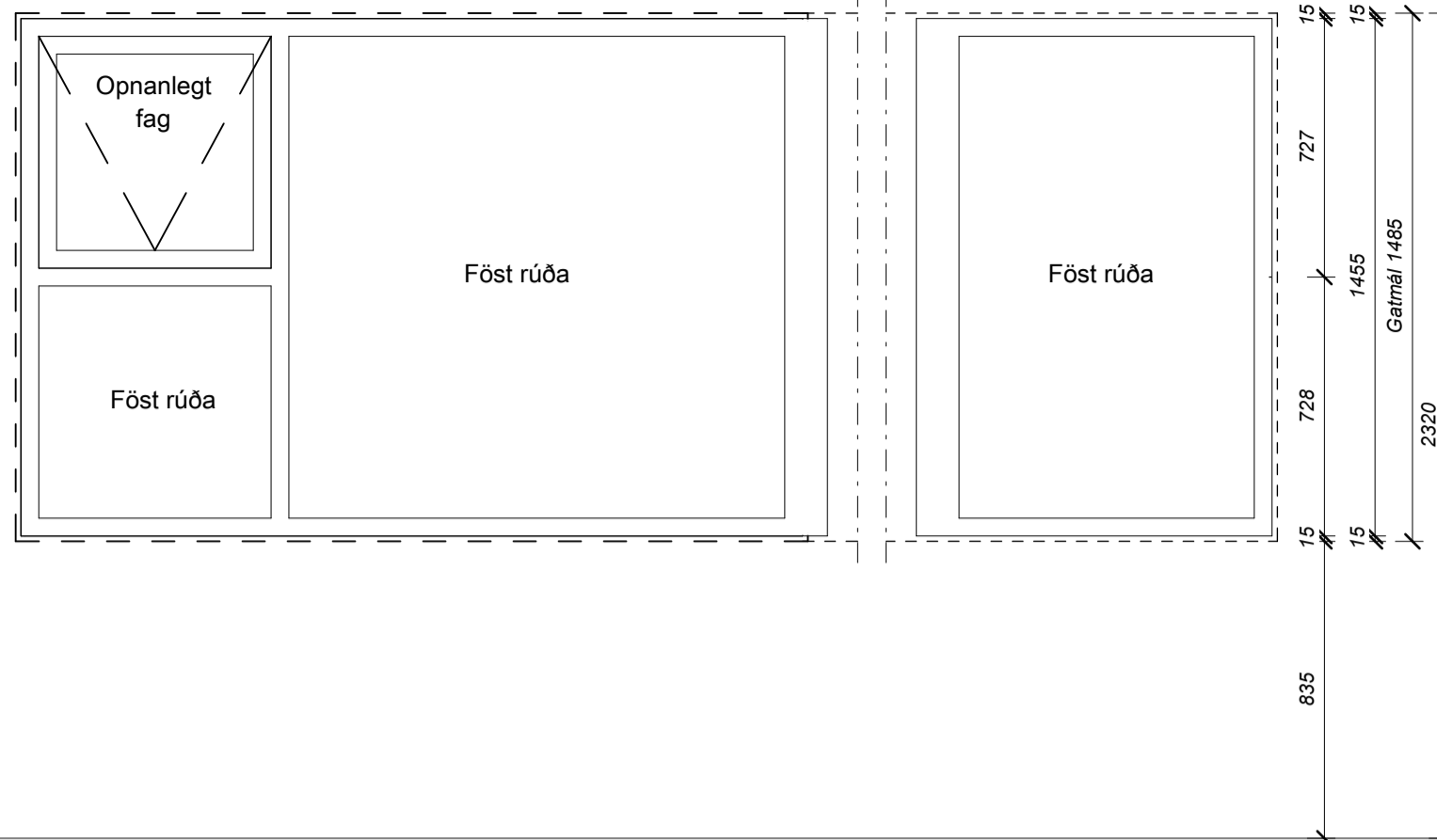
HG-1 (Rw + Ctr = 26dB)

ATH. Málsetningar á hornluggum skulu ávallt takast á staðnum án ábyrgðar arkitekta.



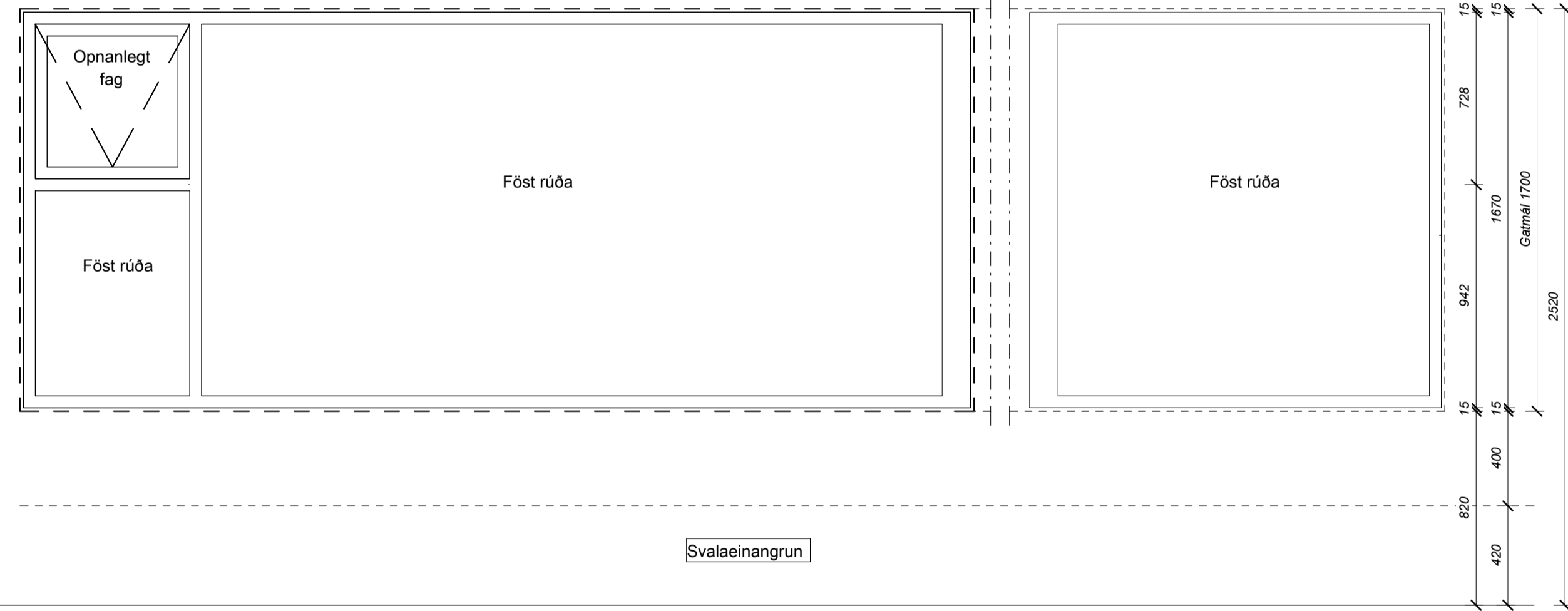
HG-2a (Rw + Ctr = 32dB)

ATH. Málsetningar á hornluggum skulu ávallt takast á staðnum án ábyrgðar arkitekta.



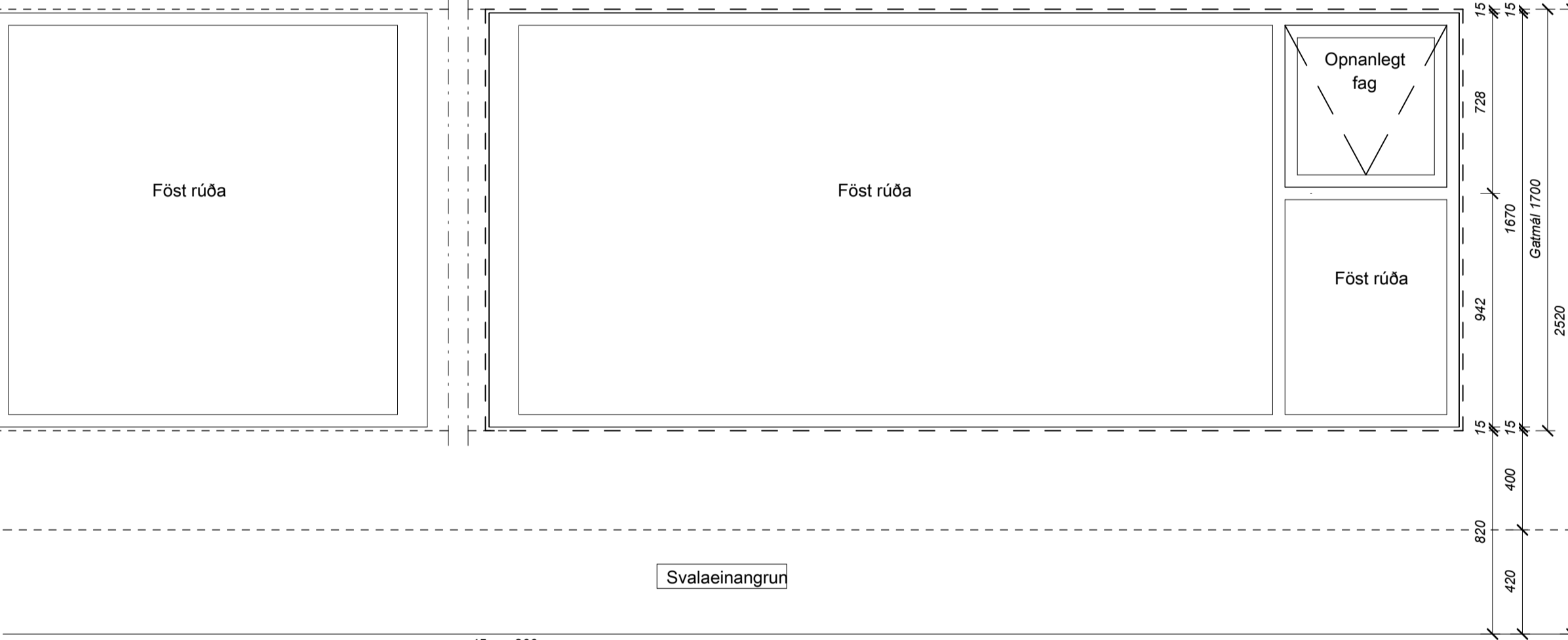
HG-3 (Rw + Ctr = 32dB)

ATH. Málsetningar á hornluggum skulu ávallt takast á staðnum án ábyrgðar arkitekta.



HG-4 (Rw + Ctr = 26dB)

ATH. Málsetningar á hornluggum skulu ávallt takast á staðnum án ábyrgðar arkitekta.



BRUNAHÖNNUÐUR

ELDVARNAREFTIRLIT

SKÝRINGAR

Gluggar eru ál/tré gluggar eða álkældir timburgluggar. Prófilar eru sýndir á táknaðan hátt og er útfærsla þeirra háð framleiðanda. Umferðarbreidd allra svalahurða skal vera minnst 0,80 m. skv. byggingarreglugerð. Umferðarbreidd allra útihurða skal vera minnst 0,83 m. skv. byggingarreglugerð. Stærð glugga/hurða miðast við ísett eftirá. Málsetningar eru til viðmiðunar, mál skal takast á staðnum Litur glugga/hurða að innan er RAL9010 og litur að utan er RAL9005.

LYKILMYND

BREYTING DAGSETNING TEIKN.

e:		
d:		
c:		
b:		
a:	Hljóðkröfum breytt	25.08.2023 HB

BAUGHAMAR 1 (MHL.01)

HAFNARFJÖRÐUR
VERKTEIKNING
GLUGGAYFIRLIT,
HORNGLUGGAR

VERK
21-655
BLAD
AV-4005

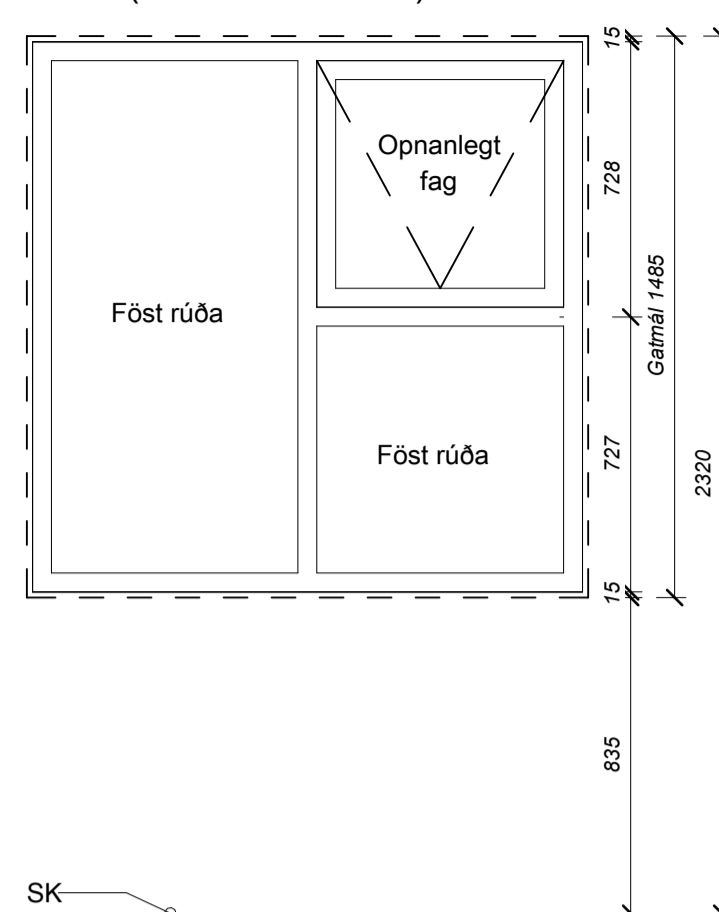
REYKJAVÍK 01.06.2023	BREYTING a
BREYTT 25.08.2023	HANNAD HB/GÖE TEIKNAD HB/GÖE YFIRFARID JEJ
KVARDI 1:20	BLADSTÆRÐ A1
SAMÞYKKT	HÖNNUNARSTJÓRI Jóhann Einar Jónsson Kt. 090982-3549



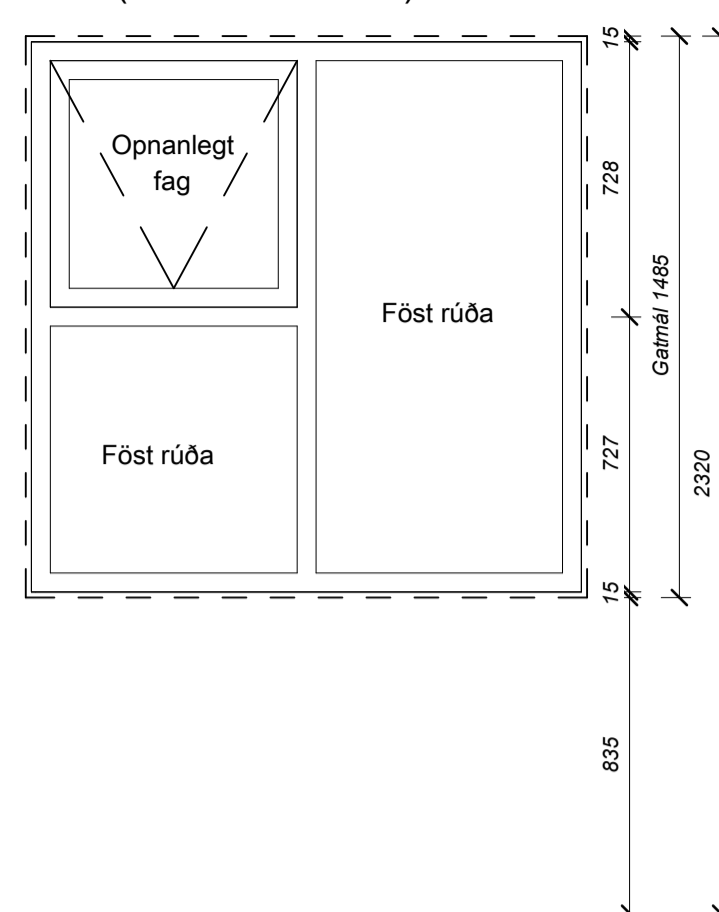
SUDURLANDSBRÁUT 20 108 REYKJAVÍK
KAUPANGI VÍÐ MYRRAVEG 600 AKUREYRI
NETFÖNG: teikna@teikna.is

SÍMI 552 8740
SÍMI 461 5508
VEFFANG: teikna.is

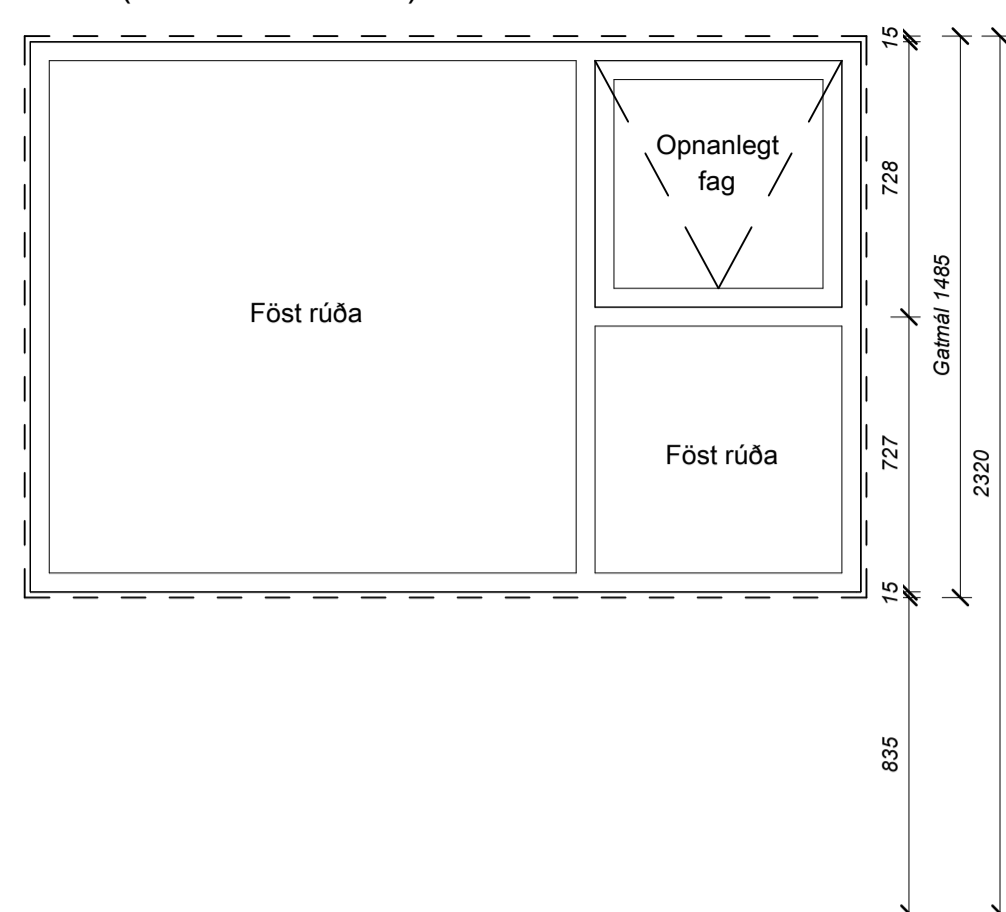
G-1e (Rw + Ctr = 32dB)



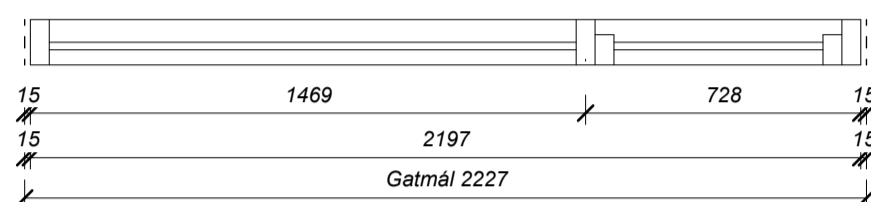
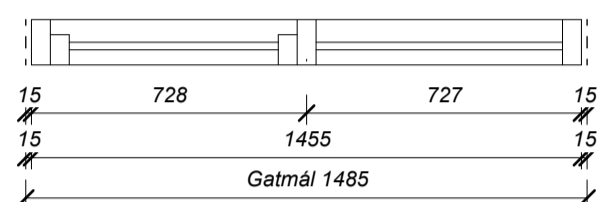
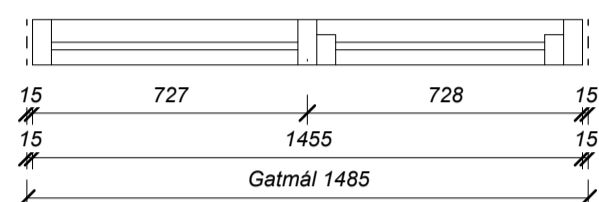
G-1f (Rw + Ctr = 32dB)



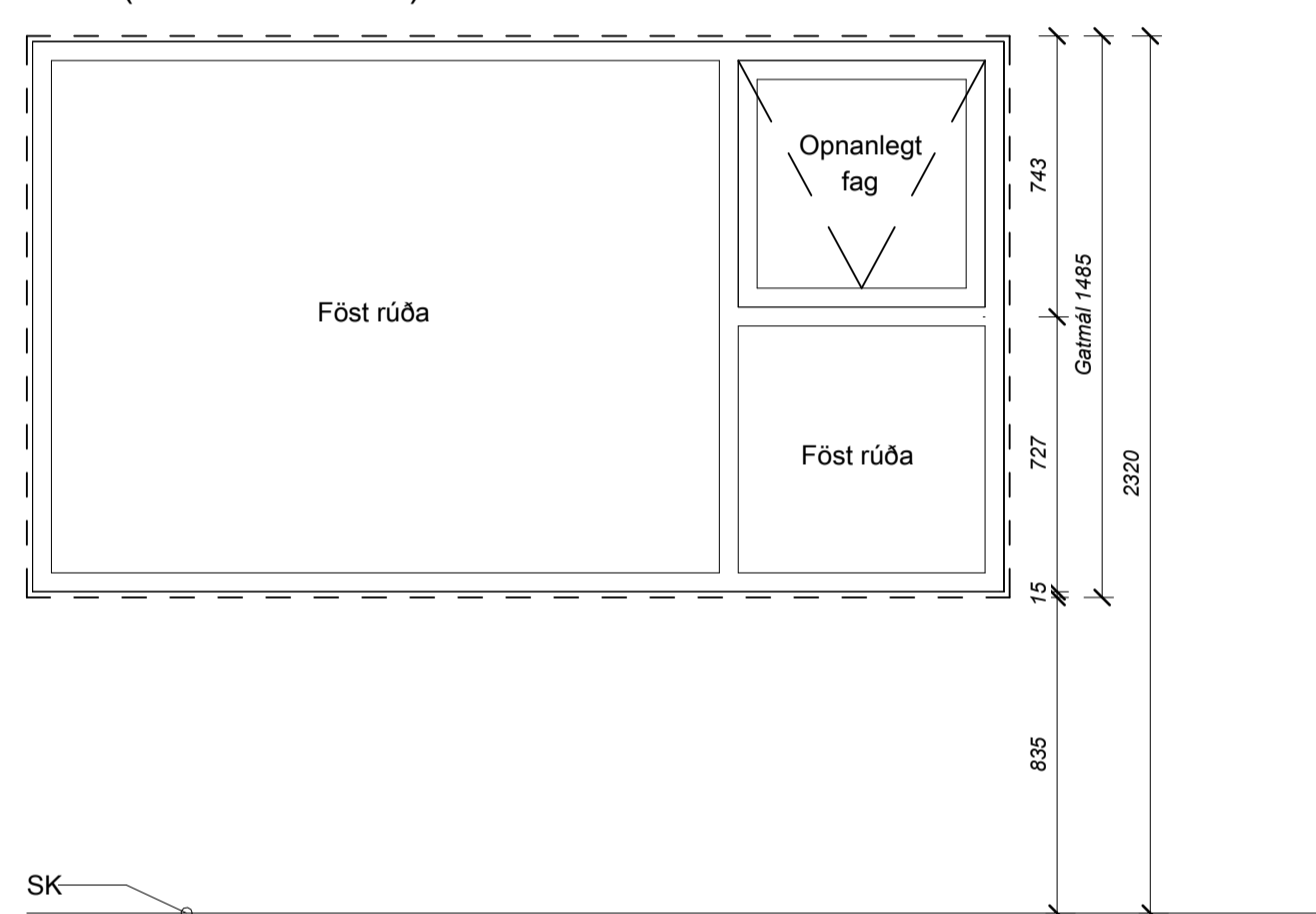
G-2c (Rw + Ctr = 36dB)



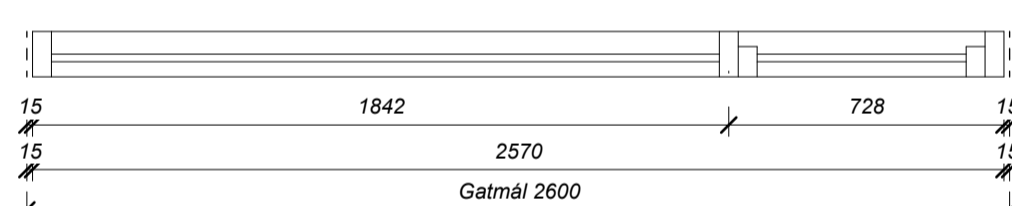
SK



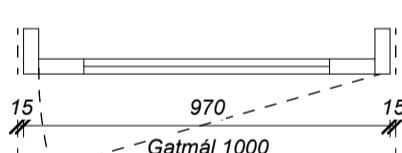
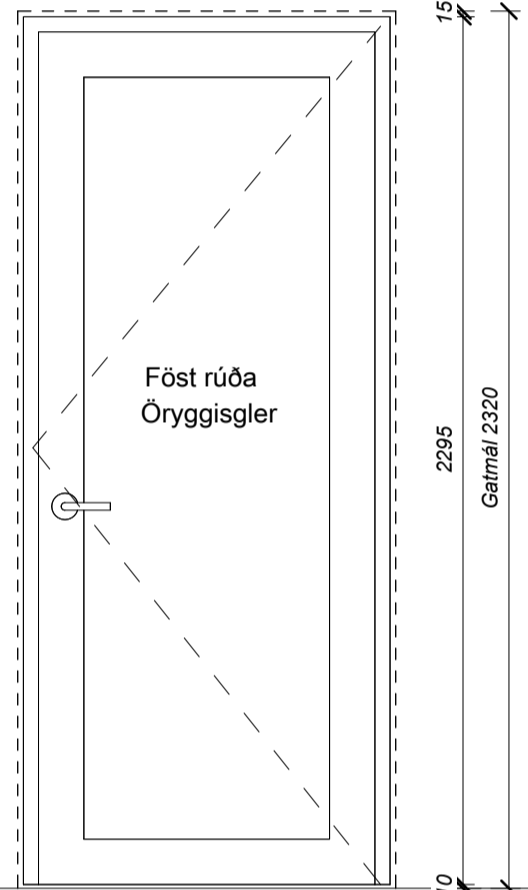
G-3c (Rw + Ctr = 36dB)



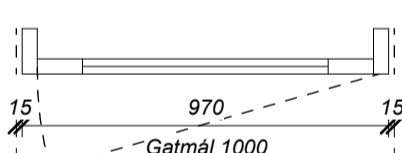
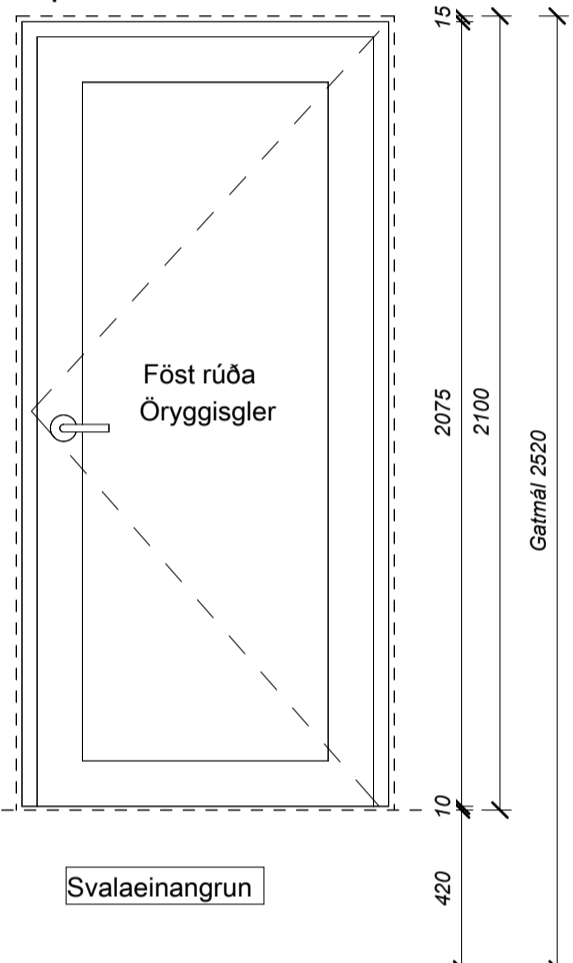
SK



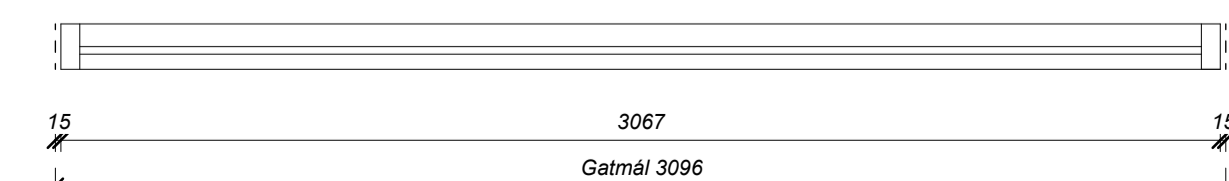
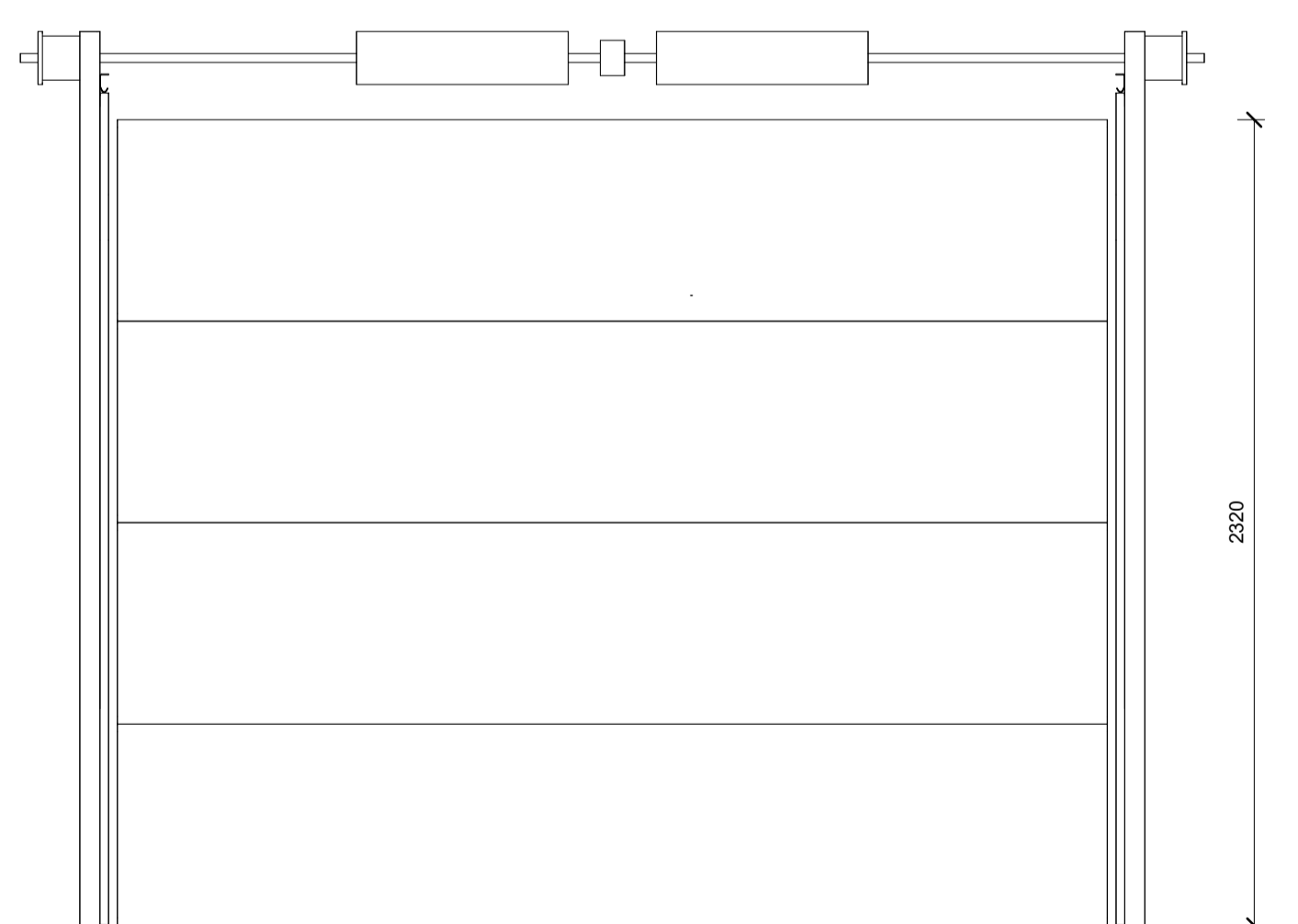
SH-1c (Rw + Ctr = 36dB),
opnast út



SH-3c (Rw + Ctr = 32dB),
opnast út



BH-1



Gluggar eru ál/tré gluggar eða áíklæddir timburgluggar.
 Prófilar eru sýndir á táknrænan hátt og er útfærsla þeirra háð framleiðanda.
 Umferðarbreidd allra svalahurða skal vera minnst 0,80 m. skv. byggingarreglugerð.
 Umferðarbreidd allra útihurða skal vera minnst 0,83 m. skv. byggingarreglugerð.
 Stærð glugga/hurða miðast við ísett eftirá.
 Málsetningar eru til viðmiðunar, mál skal takast á staðnum
 Litur glugga/hurða að innan er RAL9010 og litur að utan er RAL9005.

Gluggayfirlit

Type	Count	Hljóðkrafa	Brunapól
G-1a	14	Rw + Ctr 26dB	
G-1b	15	Rw + Ctr 26dB	
G-1c	10	Rw= 44dB	
G-1d	8	Rw= 44dB	
G-1e	4	Rw + Ctr 32dB	
G-1f	5	Rw + Ctr 32dB	
G-2a	10	Rw + Ctr 26dB	
G-2b	8	Rw + Ctr 26dB	
G-2c	2	Rw + Ctr 36dB	
G-3a	3	Rw + Ctr 26dB	
G-3b	5	Rw + Ctr 26dB	
G-3c	2	Rw + Ctr 36dB	
G-4	16	Rw + Ctr 32dB	E 30
G-5	4	Rw + Ctr 32dB	
G-6a	5	Rw= 41dB	
G-6b	5	Rw= 41dB	
G-7	6	Rw= 29dB	
G-8	2	Rw + Ctr 32dB	
G-9	1	Rw + Ctr 32dB	
G-10	1	Rw + Ctr 26dB	
G-11	2	Rw + Ctr 26dB	
G-12	1	Rw + Ctr 26dB	
G-13	1	Rw + Ctr 36dB	
G-15	1	Rw + Ctr 26dB	
GH-1a	1	Rw= 29dB	
GH-1b	1	Rw= 29dB	Ei230cs
GH-2	1	Rw + Ctr 36dB	
GH-3	5	Rw + Ctr 26dB	
GH-4	5	Rw + Ctr 26dB	
GH-5	5	Rw + Ctr 26dB	
GH-6	5	Rw + Ctr 32dB	
GH-7	1	Rw + Ctr 26dB	
GH-8	1	Rw + Ctr 26dB	
GH-9	1	Rw + Ctr 32dB	
GH-10	1	Rw + Ctr 26dB	

Grand total: 158

HG-1	5	Rw + Ctr 26dB
HG-2a	9	Rw + Ctr 32dB
HG-2b	1	Rw= 44dB
HG-3	1	Rw + Ctr 32dB
HG-4	1	Rw + Ctr 26dB
HG-5	1	Rw + Ctr 26dB
HG-6	1	Rw + Ctr 32dB
Alls horngl.	19	
Alls gluggar	177	stk

Hurðayfirlit

Model	Count	Brunapól	Hljóðkrafa
SH-1a	5		Rw + Ctr 26dB
SH-1b	3		Rw + Ctr 26dB
SH-1c	1		Rw + Ctr 36dB
SH-2	1		Rw + Ctr 26dB
SH-3a	1		Rw + Ctr 26dB
SH-3b	1		Rw + Ctr 26dB
SH-3c	1		Rw + Ctr 32dB
ÚH-1a	9		Rw= 37dB
ÚH-1b	2		Rw= 37dB
ÚH-1c	10	EW 30-CSa	Rw= 37dB
ÚH-1d	1	EW 30-CSa	Rw= 37dB
ÚH-2a	6		Rw= 37dB
ÚH-2b	5		Rw= 37dB
ÚH-3	1		Rw= 29dB
ÚH-4a	1		Rw= 29dB
ÚH-4b	1		Rw= 29dB
ÚH-5a	2		Rw= 29dB
ÚH-5b	2		Rw= 29dB
ÚH-6a	5	EW 30-CS	Rw= 29dB
ÚH-6b	5	EW 30-CS	Rw= 29dB

Grand total: 63

BH-1 1

BRUNAHÖNNUÐUR

ELDVARNAREFTIRLIT

SKÝRINGAR

LYKILMYND

BREYTING DAGSETNING TEIKN.

e:		
d:		
c:		
b:		
a: Hljóðkröfum breytt og nýjar gluggatípur bætast við	25.08.2023	HB

BAUGHAMAR 1 (MHL.01)

HAFNARFJÖRÐUR	VERK 21-655
VERKTEIKNING	BILAD
GLUGGAYFIRLIT	AV-4006

REYKJAVÍK 01.06.2023		
BREYTT 25.08.2023	BREYTING a	
HANNAÐ HB/GÖE	TEIKNAD HB/GÖE	YFIRFARID JEJ
KVARDI	BLAÐSTÆRD A1	
SAMÞYKKT	HÖNNUNARSTJÓRI Jóhann Einar Jónsson Kl. 090982-3549	